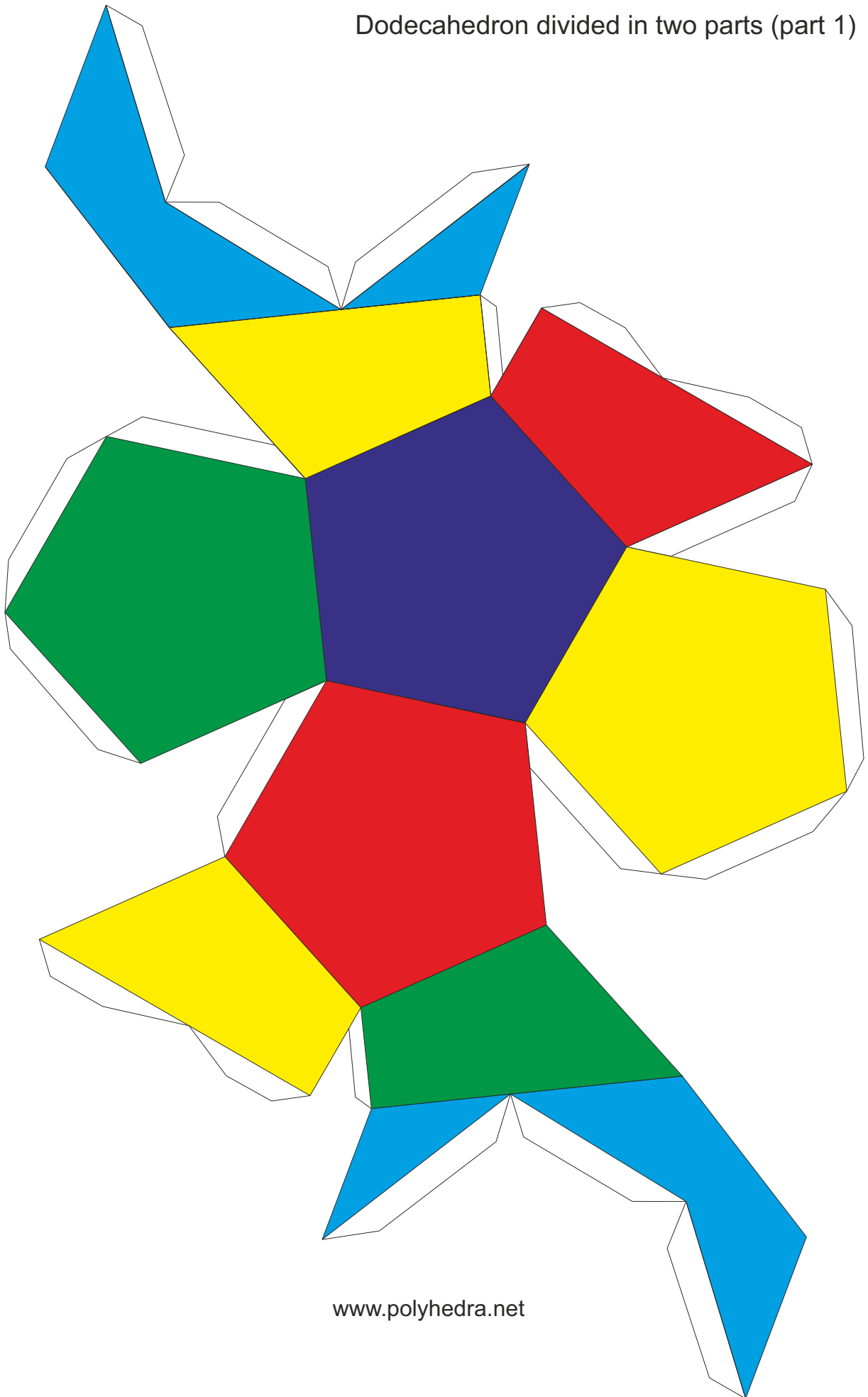


**Paper Models of Polyhedra  
Collection 7:  
Platonic solids with duals inside**

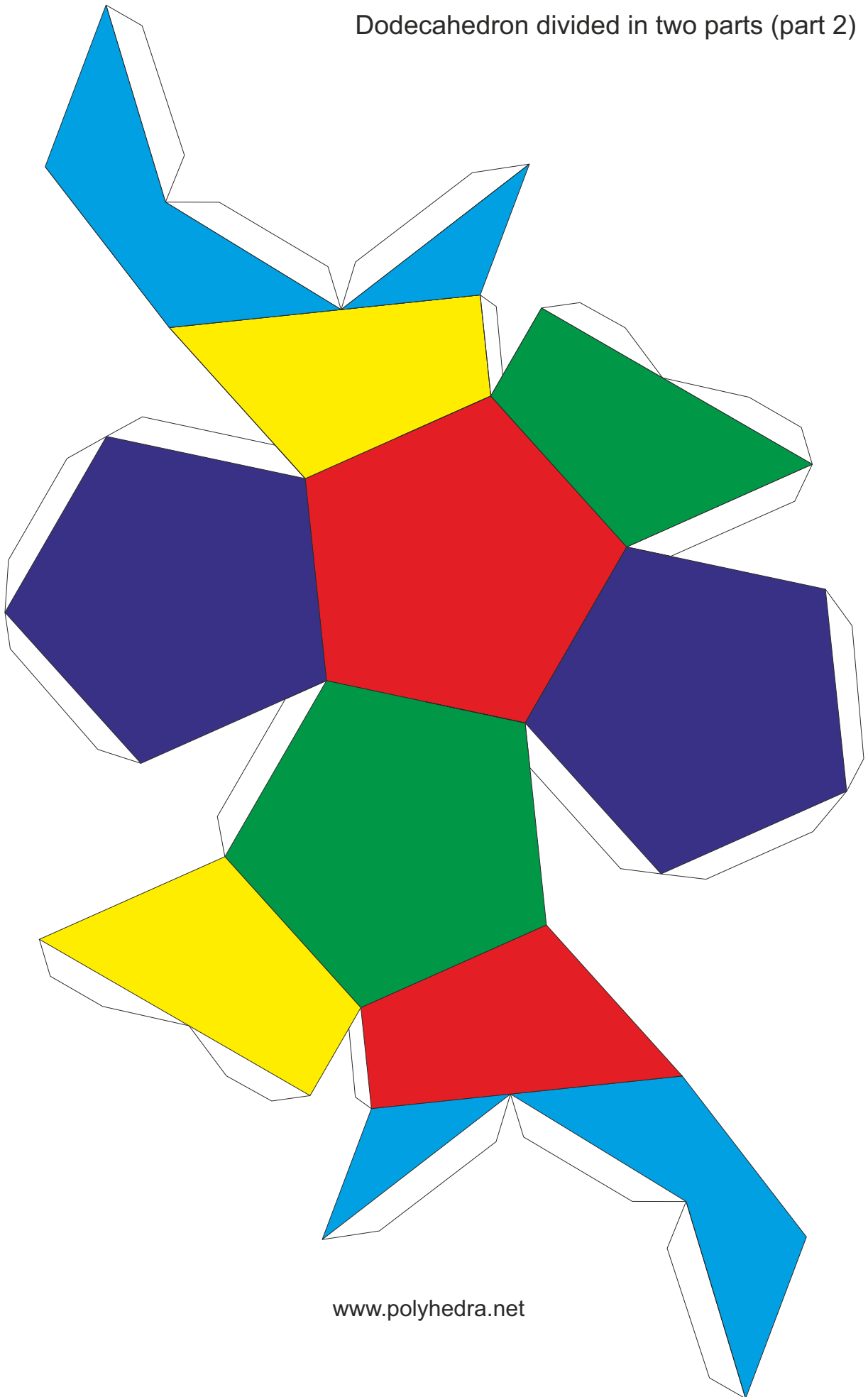
- Dodecahedron in two parts with a Icosahedron inside
- Cube in two parts with a Octahedron inside
- Octahedron in two parts with a Cube Inside
- Icosahedron in two parts with a Dodecahedron inside
- Tetrahedron in two parts with a Tetrahedron inside
- Dodecahedron in two parts with a Cube inside (no duals)

**[www.polyhedra.net](http://www.polyhedra.net)**

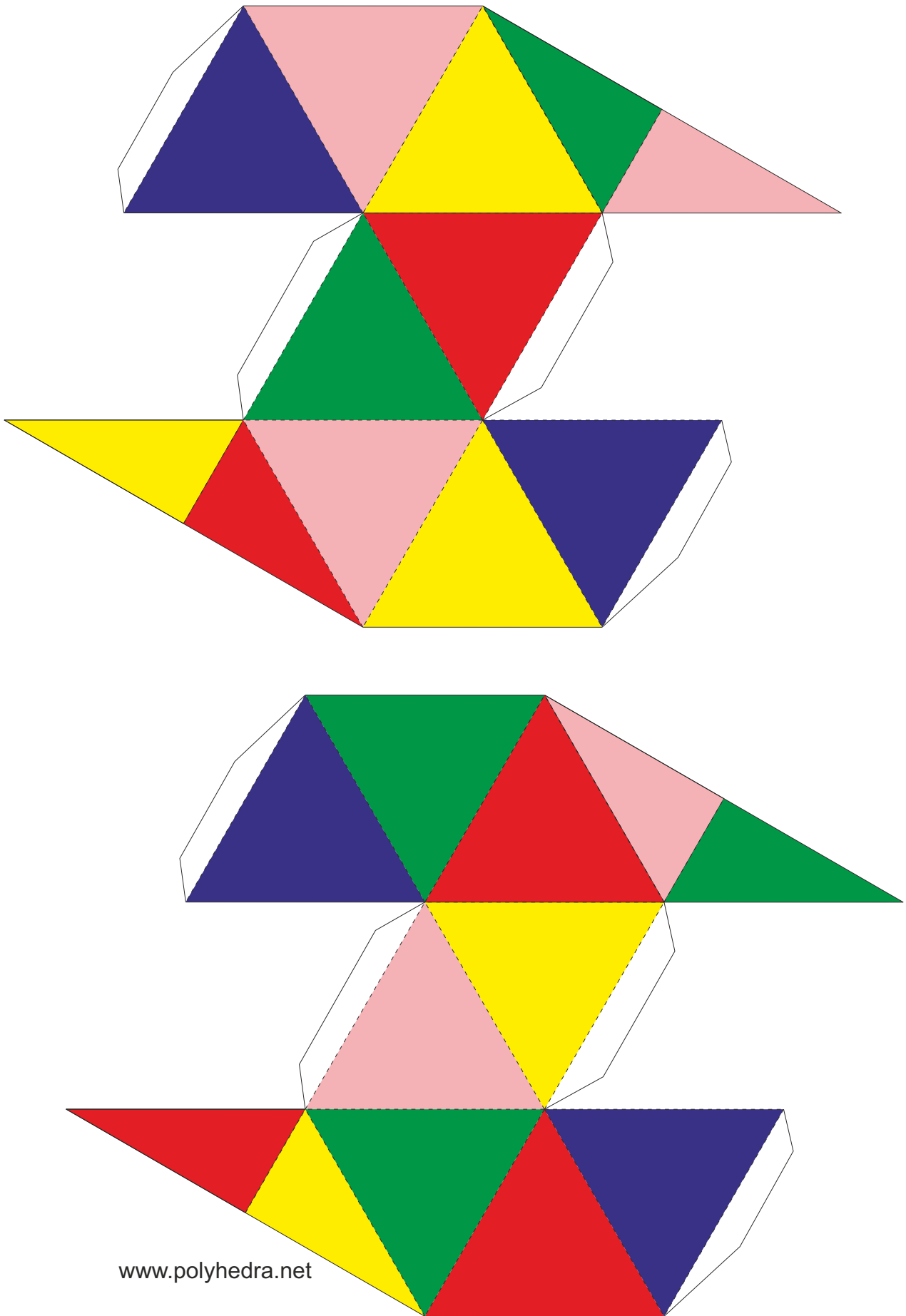
Dodecahedron divided in two parts (part 1)



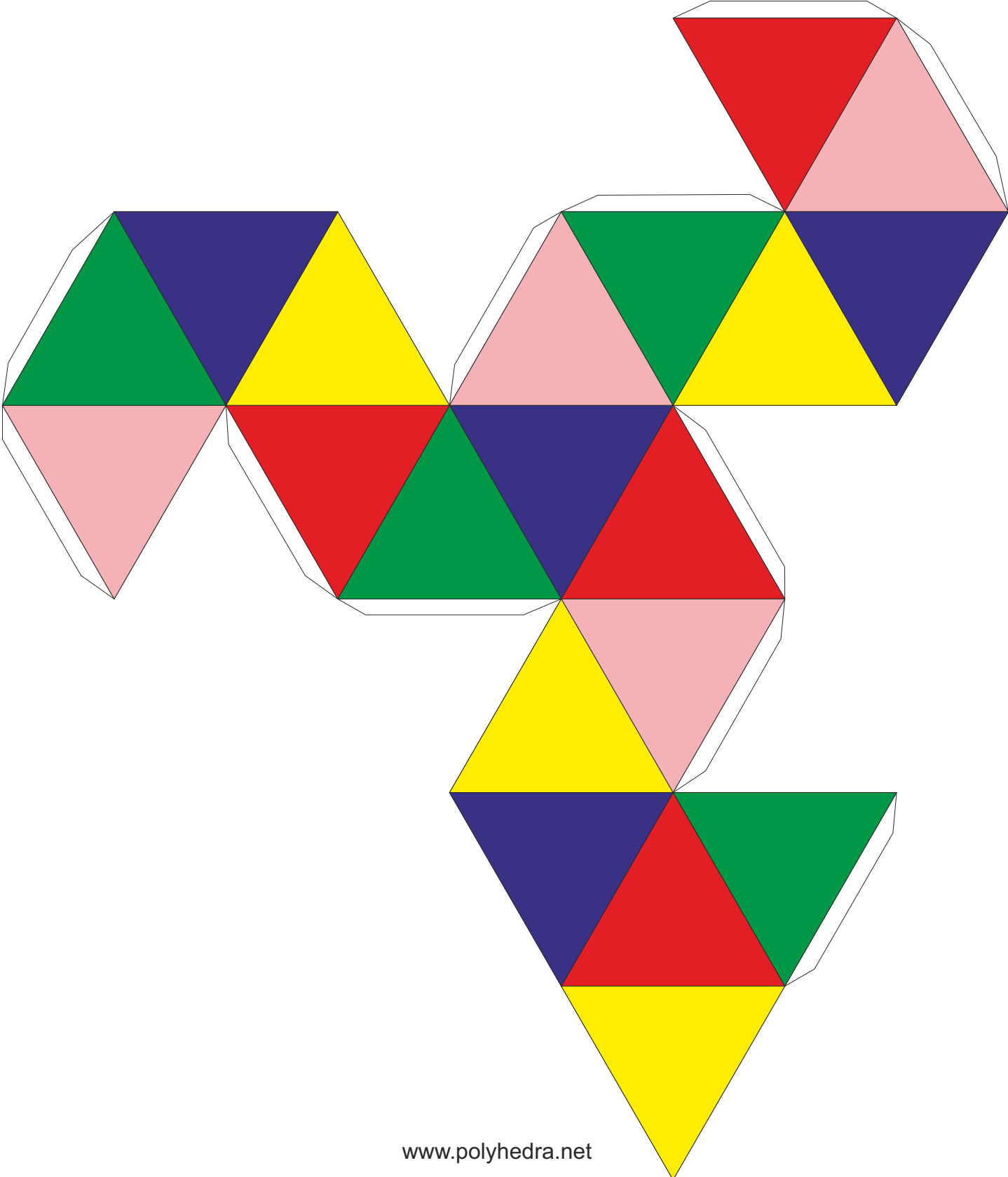
Dodecahedron divided in two parts (part 2)

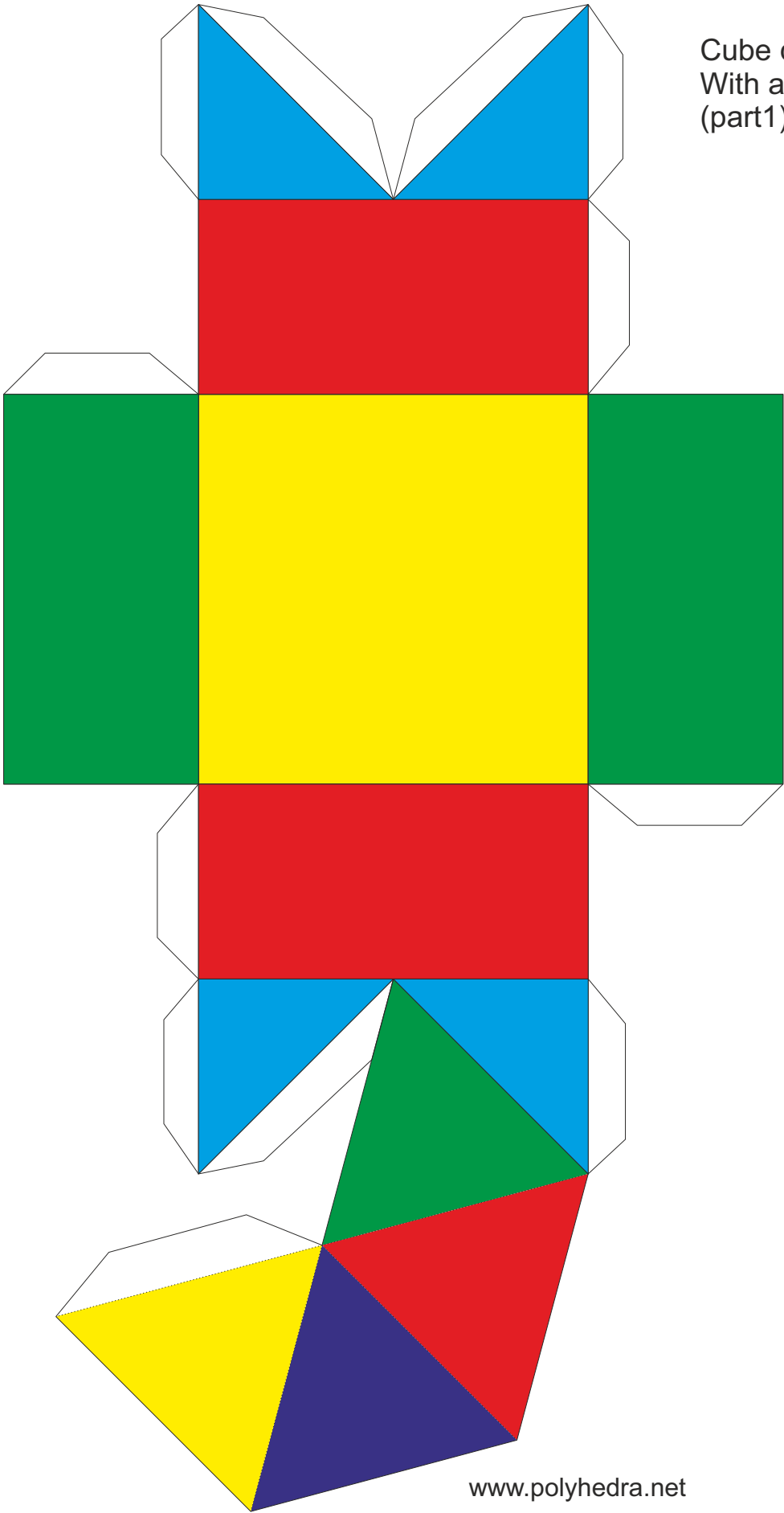


Icosahedral interior of the dodecahedron



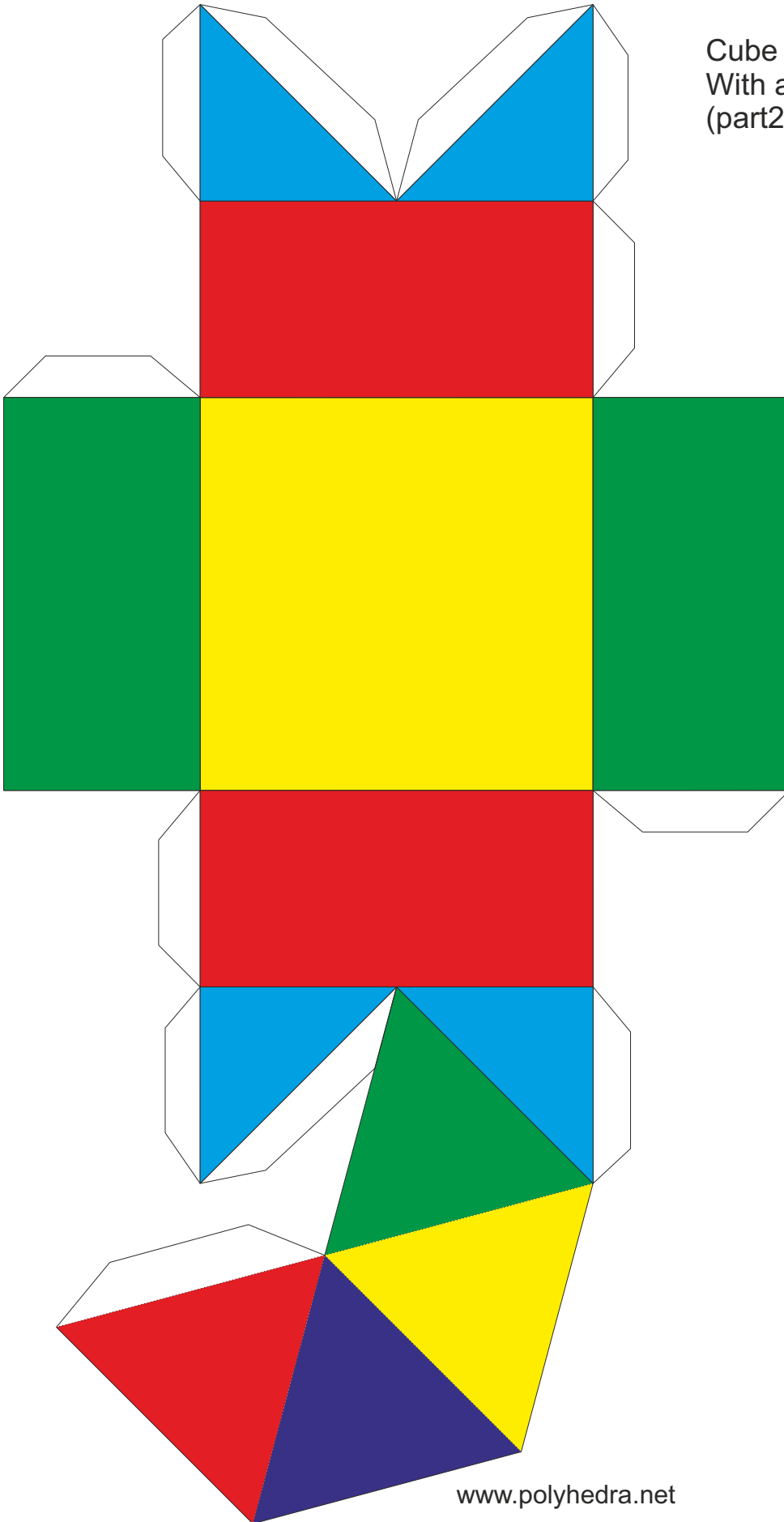
Icosahedron



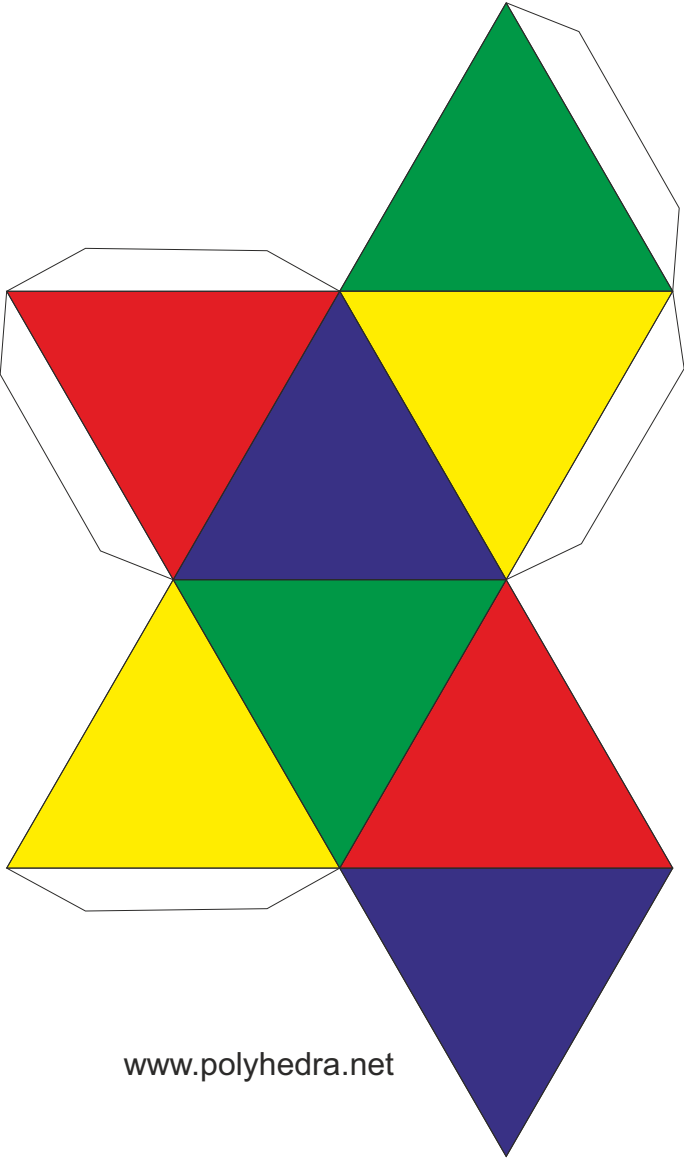


Cube divide in two parts  
With a octhadron inside  
(part1)

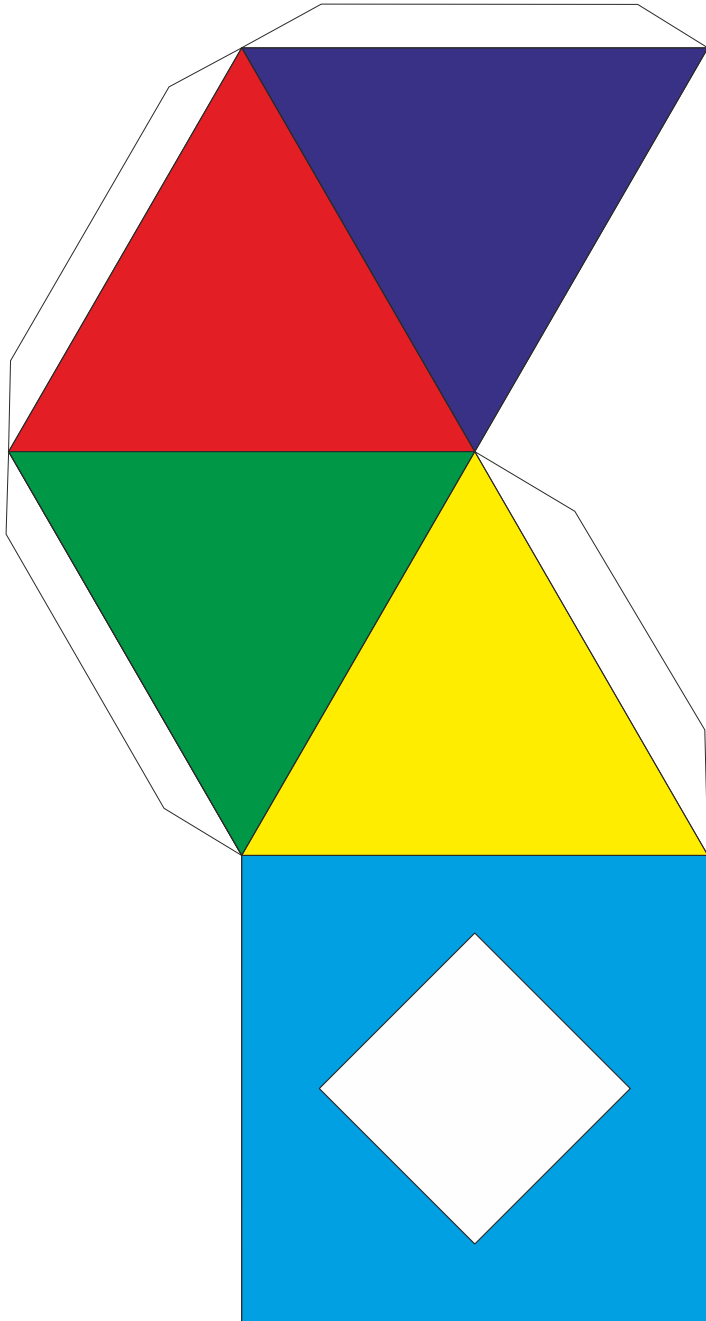
Cube divide in two parts  
With a octhadron inside  
(part2)



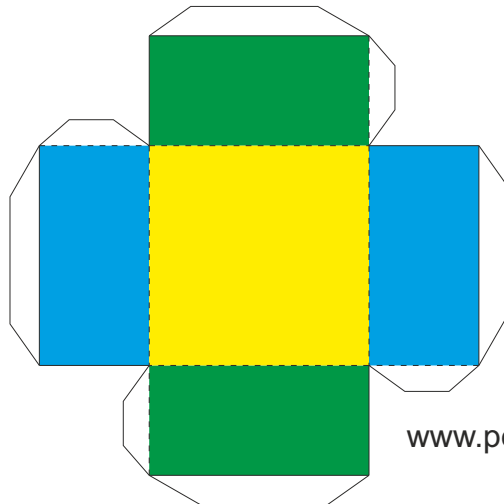
Octahedron:



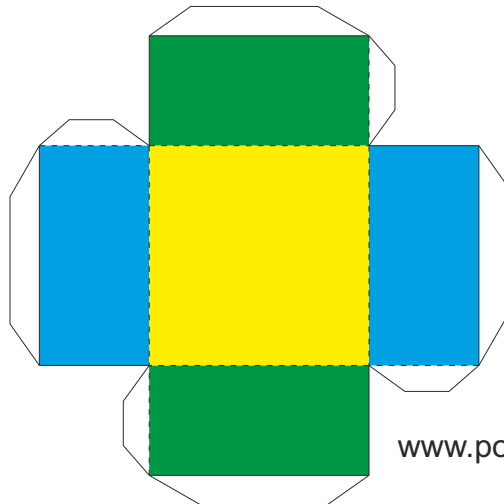
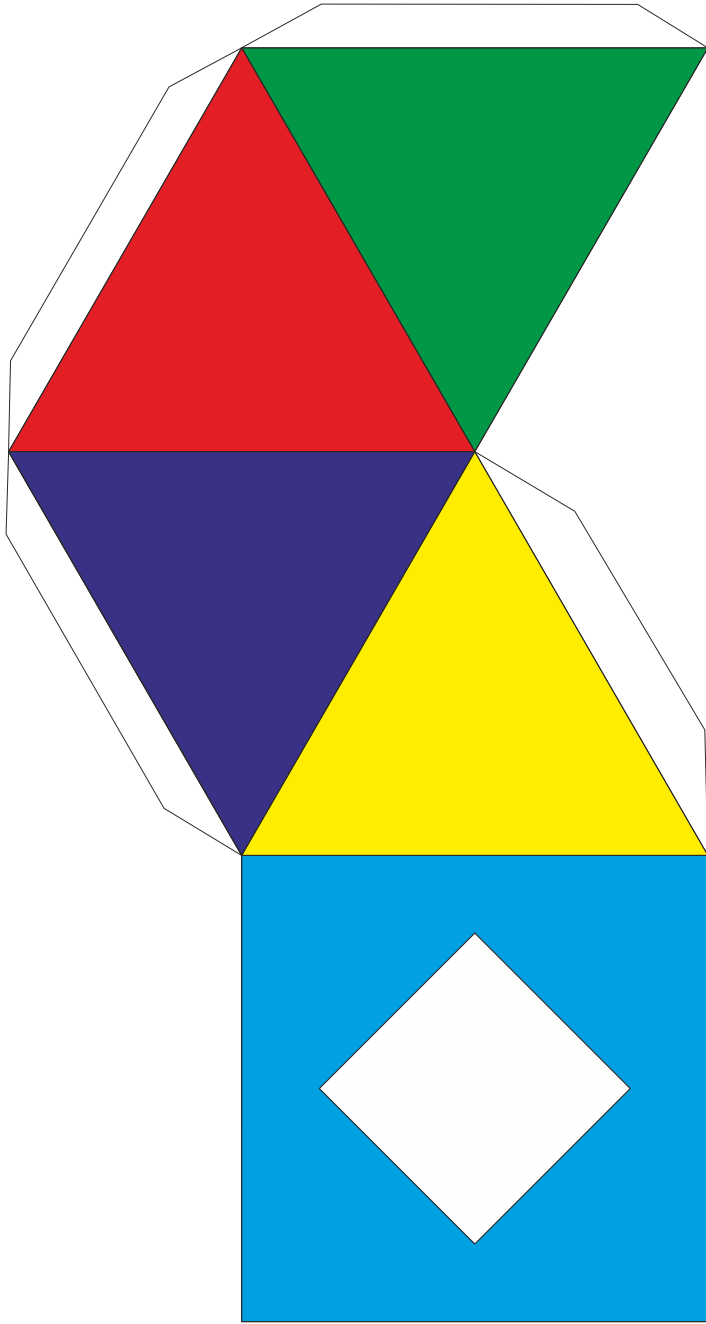




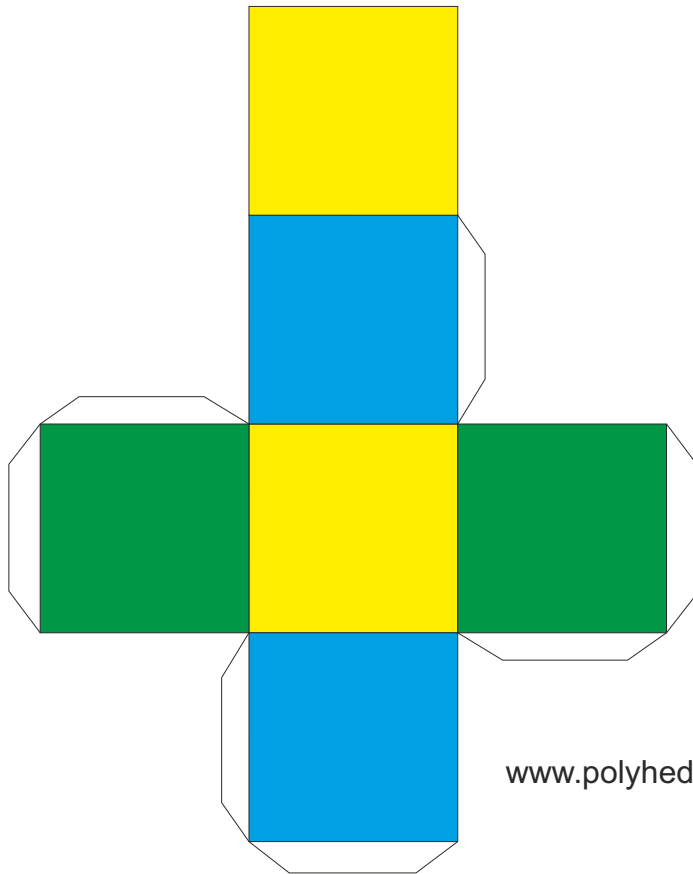
Octahedron with  
Cube inside  
(part 1)



Octahedron with  
Cube inside  
(part 2)

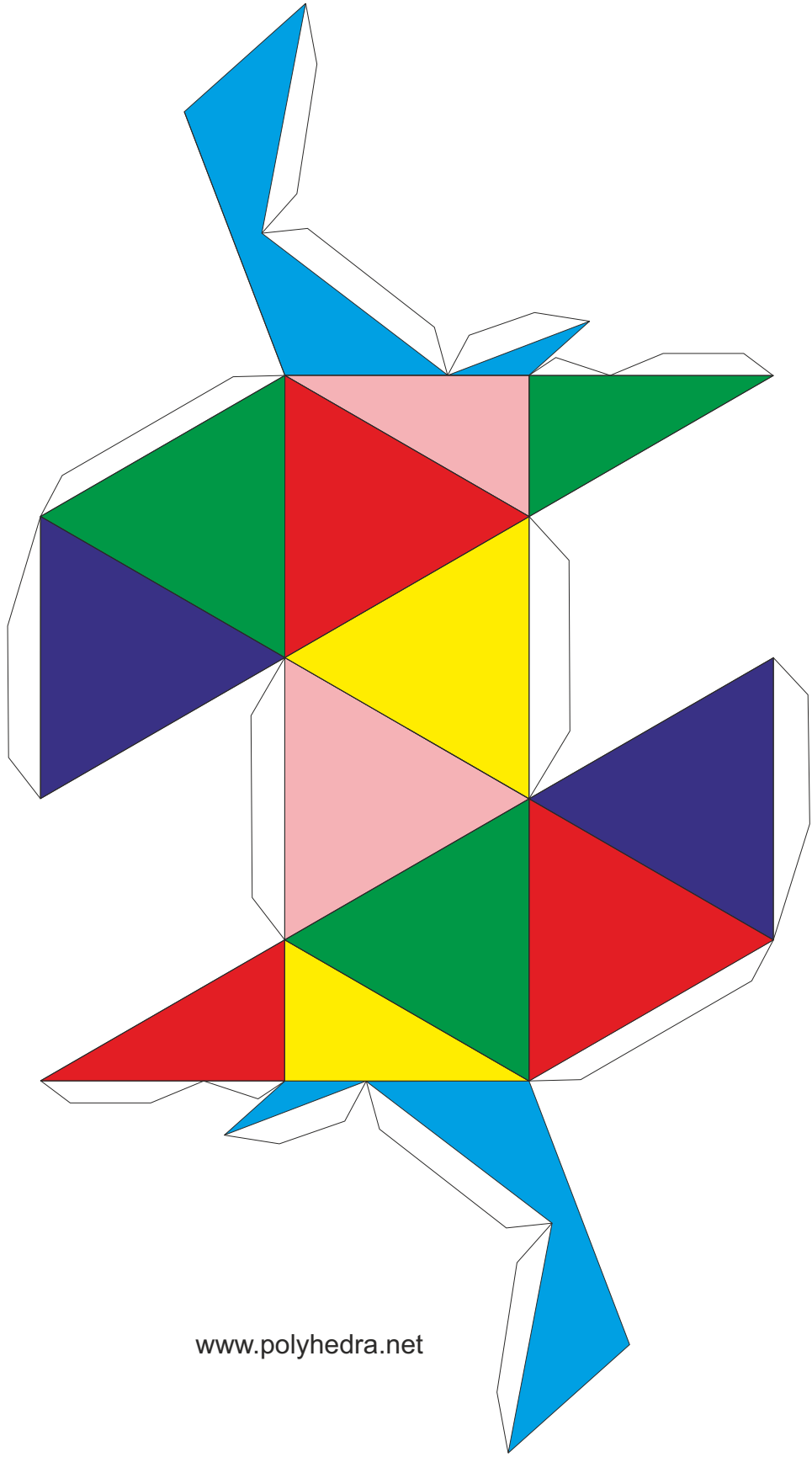


Octahedron with  
Cube inside  
(Cube)

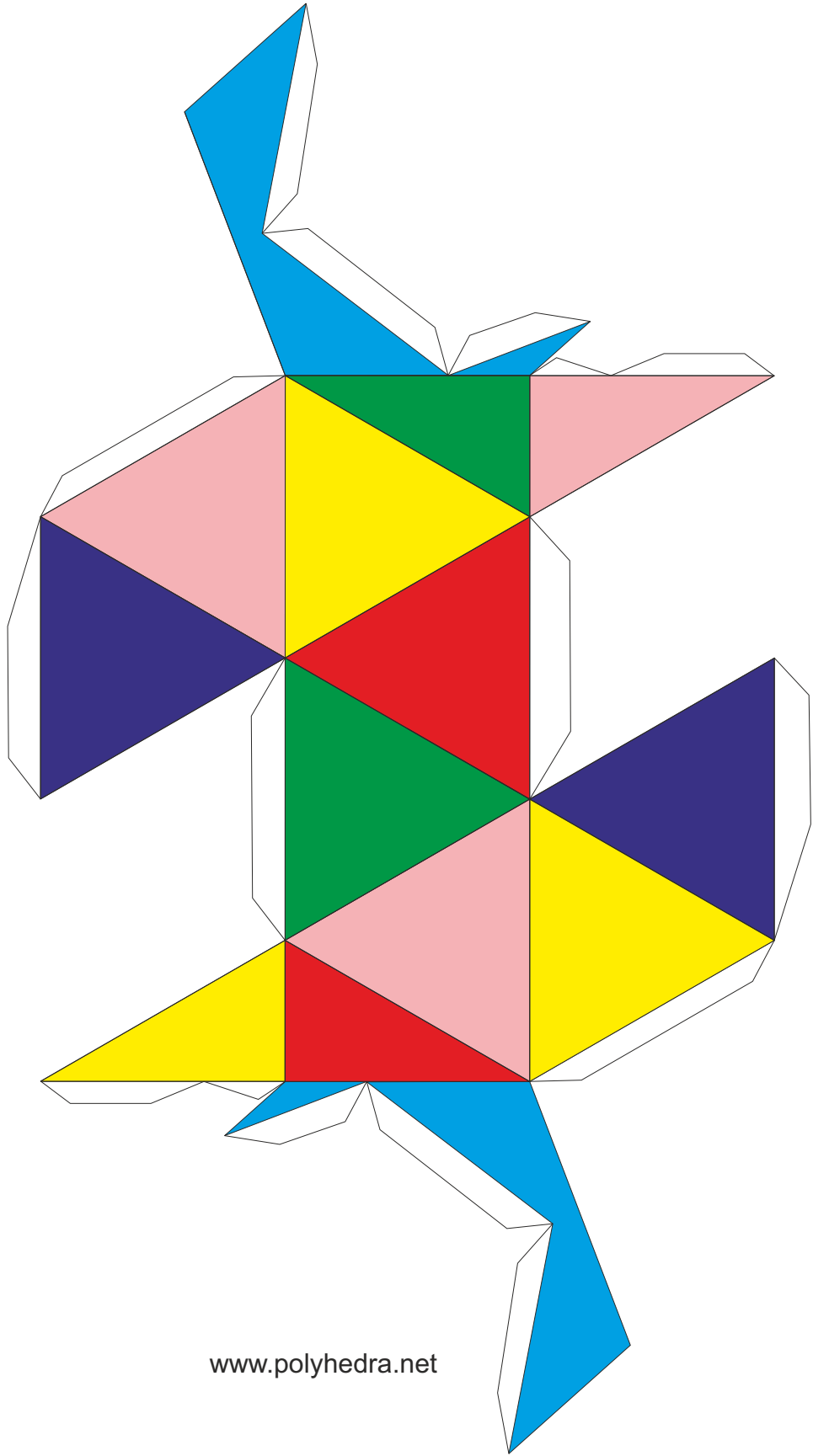


[www.polyhedra.net](http://www.polyhedra.net)

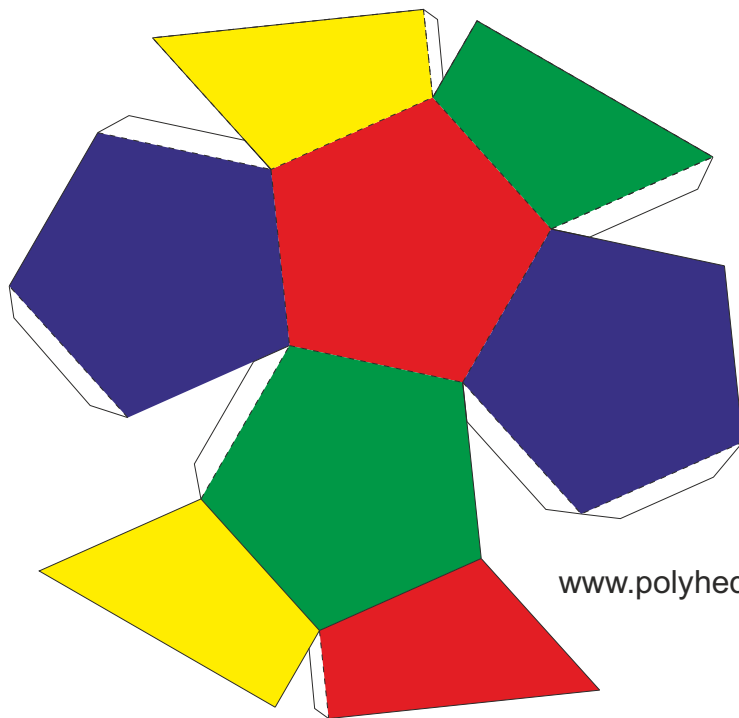
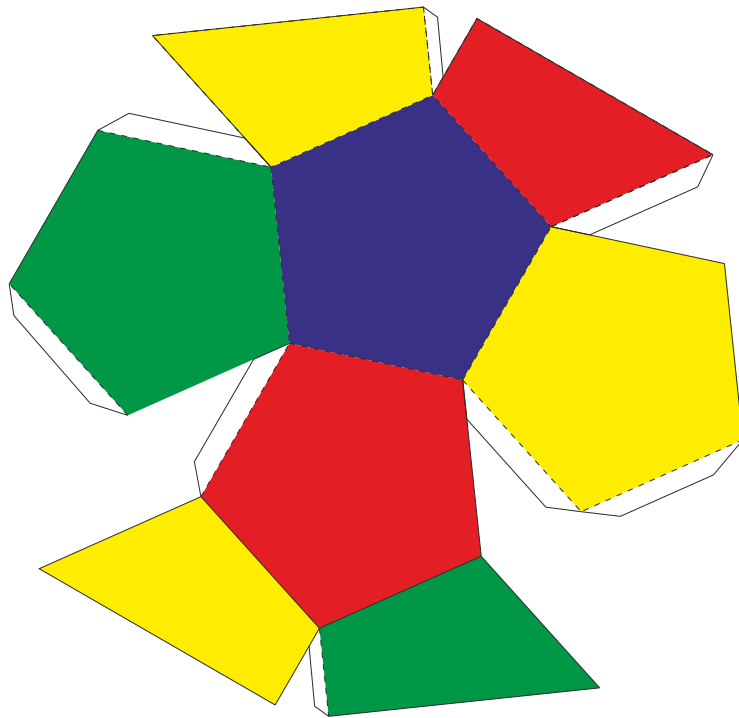
Icosahedron with Dodecahedron inside(part 1)



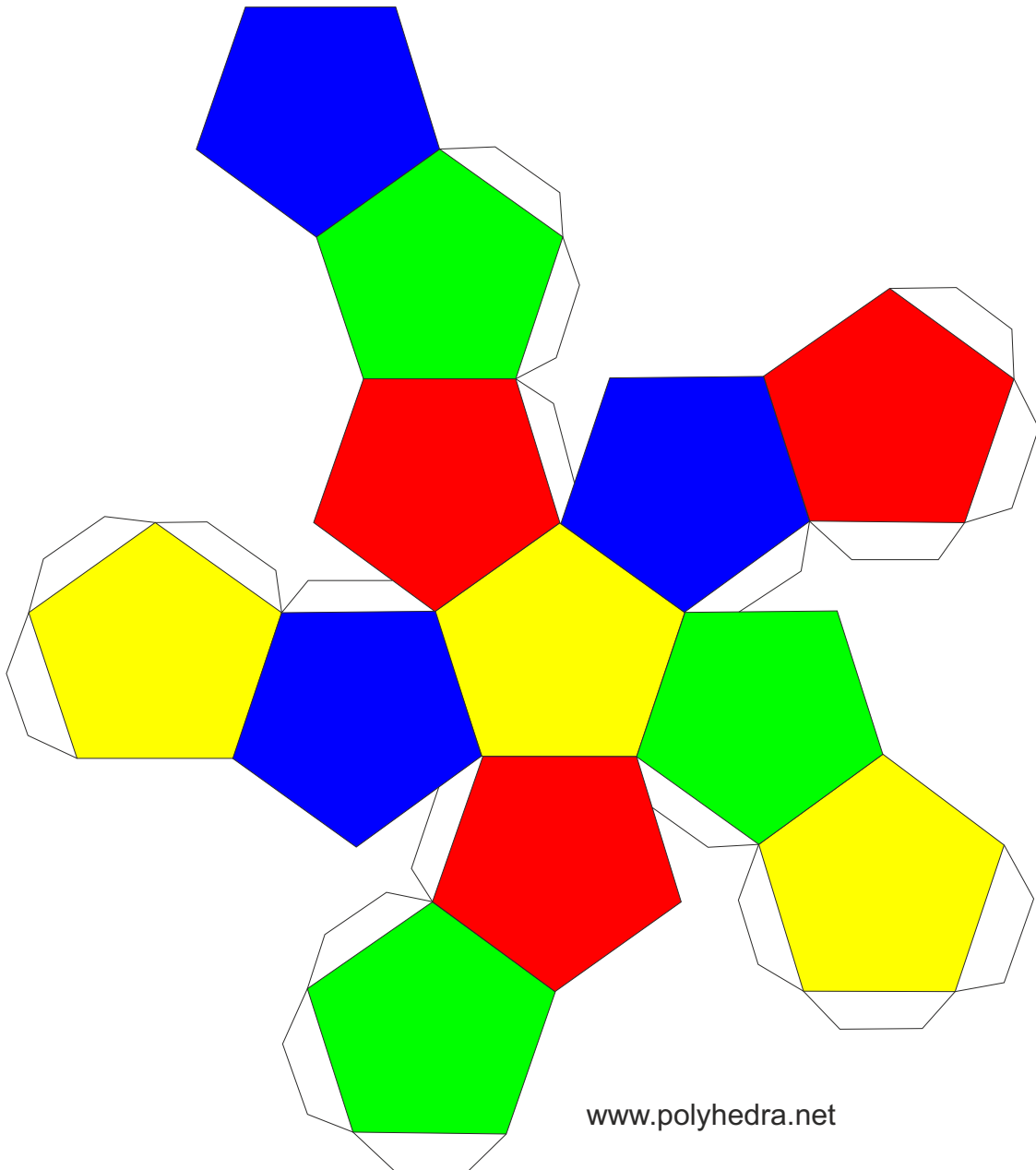
Icosahedron with Dodecahedron inside(part 2)



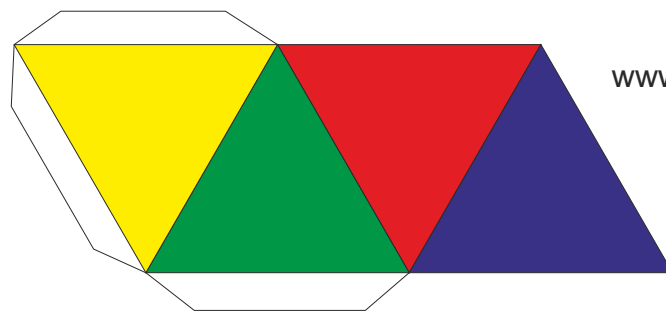
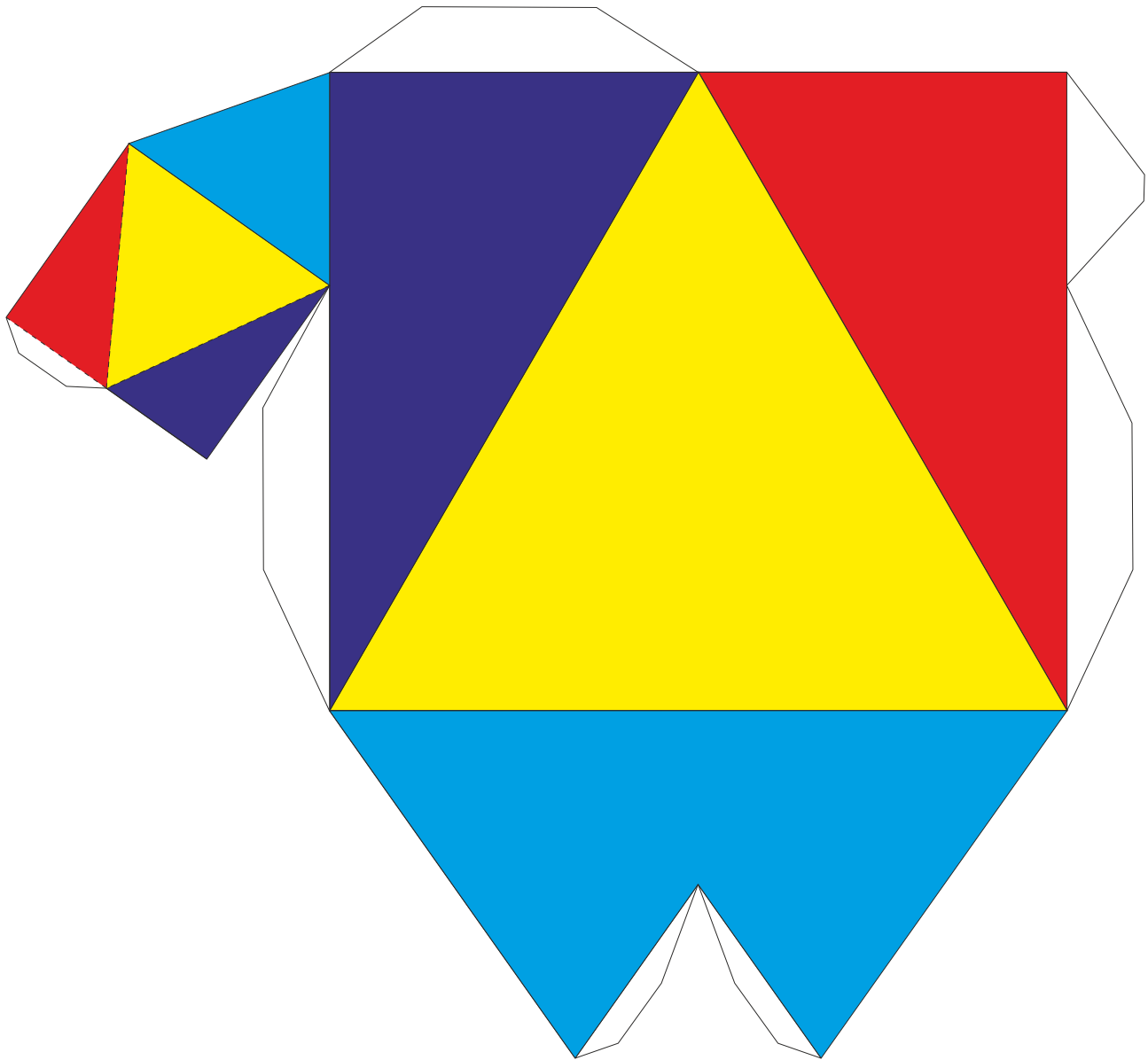
Icosahedron with Dodecahedron inside(part 3 and 4: interior of the icosahedron)



# Dodecahedron



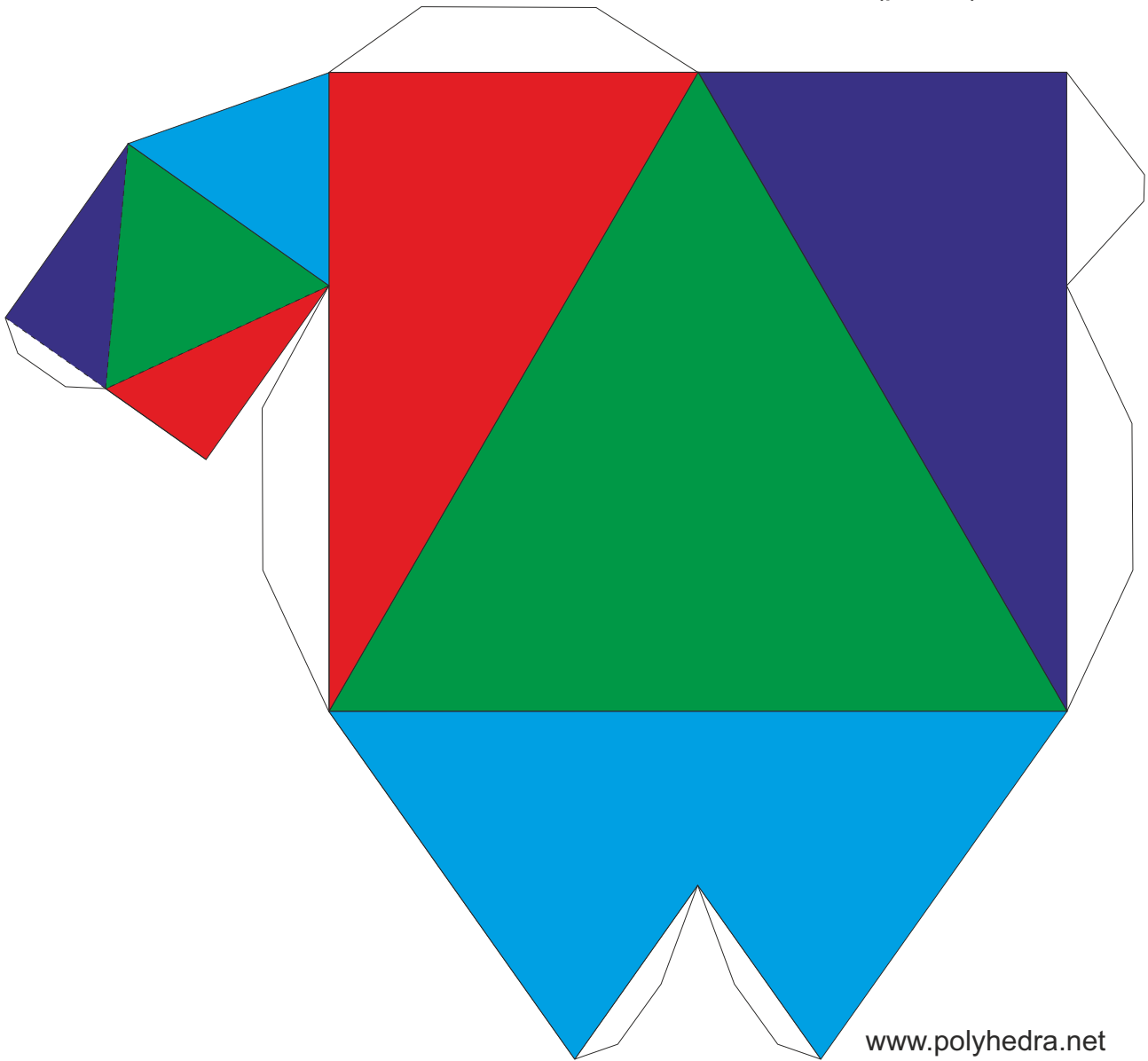
Tetrahedron in two parts  
with a Tetrahedron inside (part 1 and a Tetrahedron)



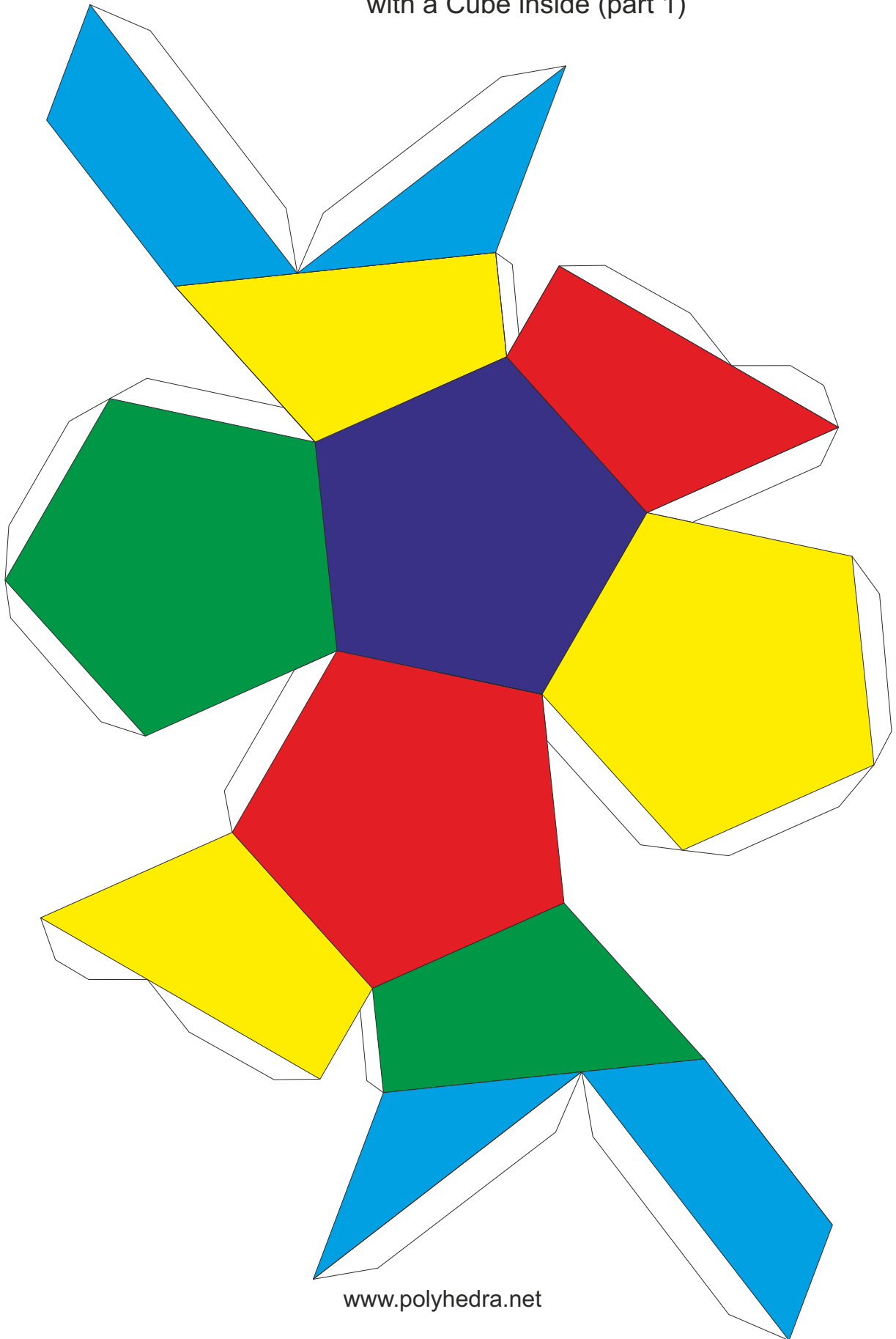
[www.polyhedra.net](http://www.polyhedra.net)



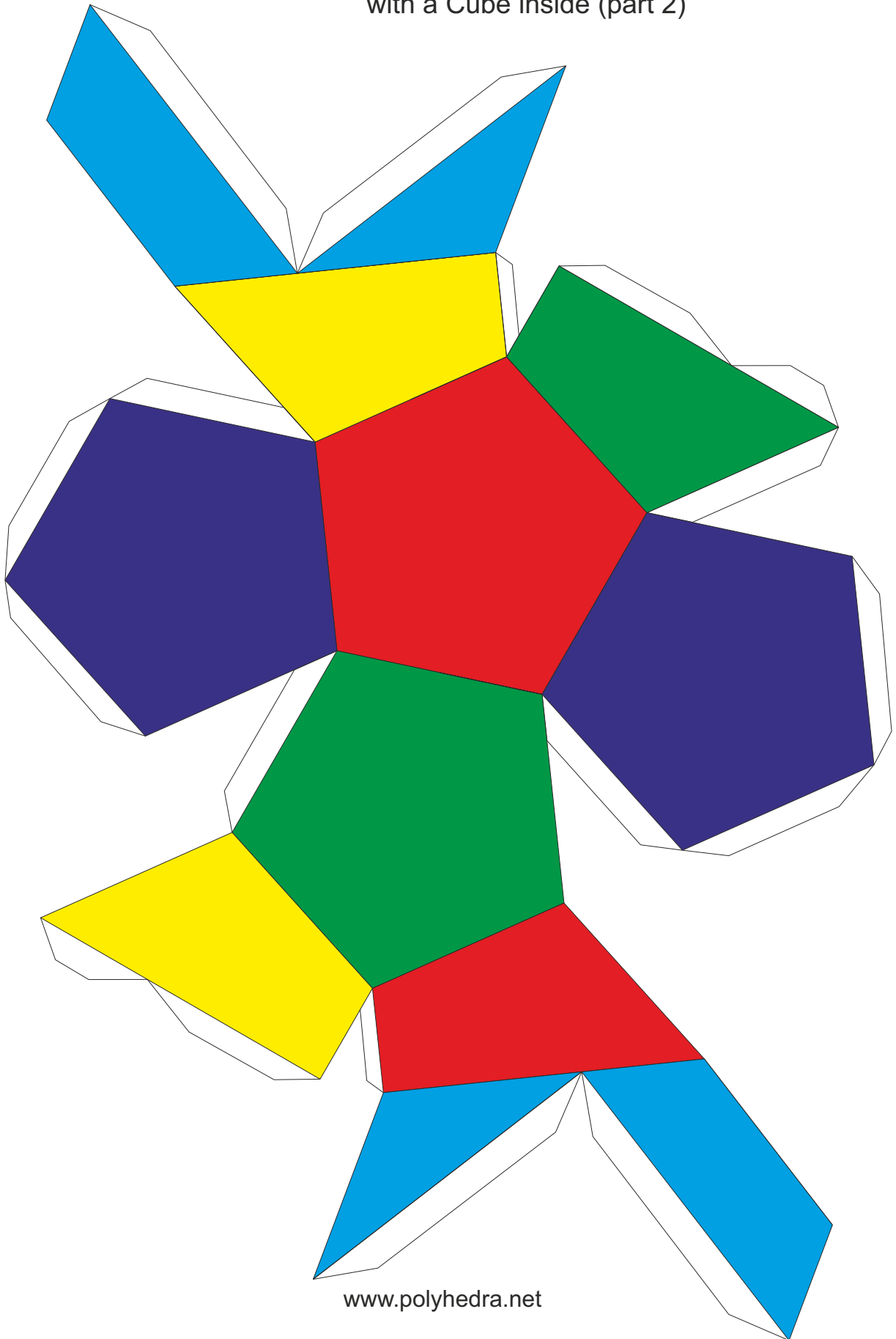
Tetrahedron in two parts  
with a Tetrahedron inside (part 2)



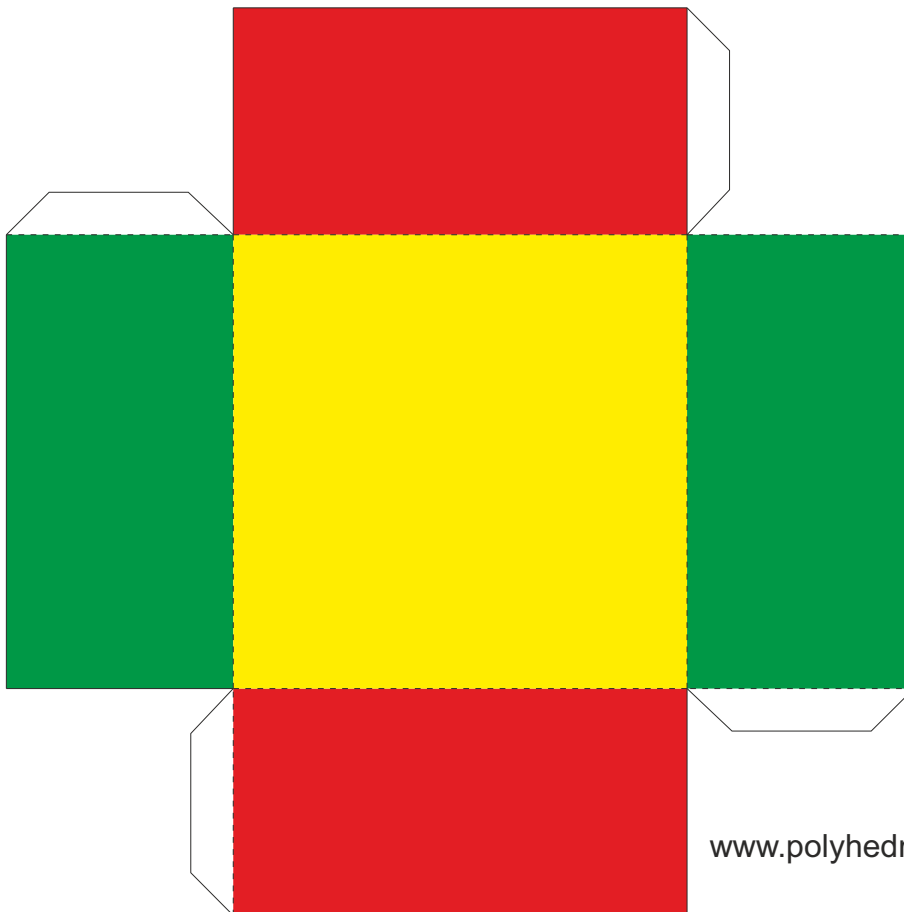
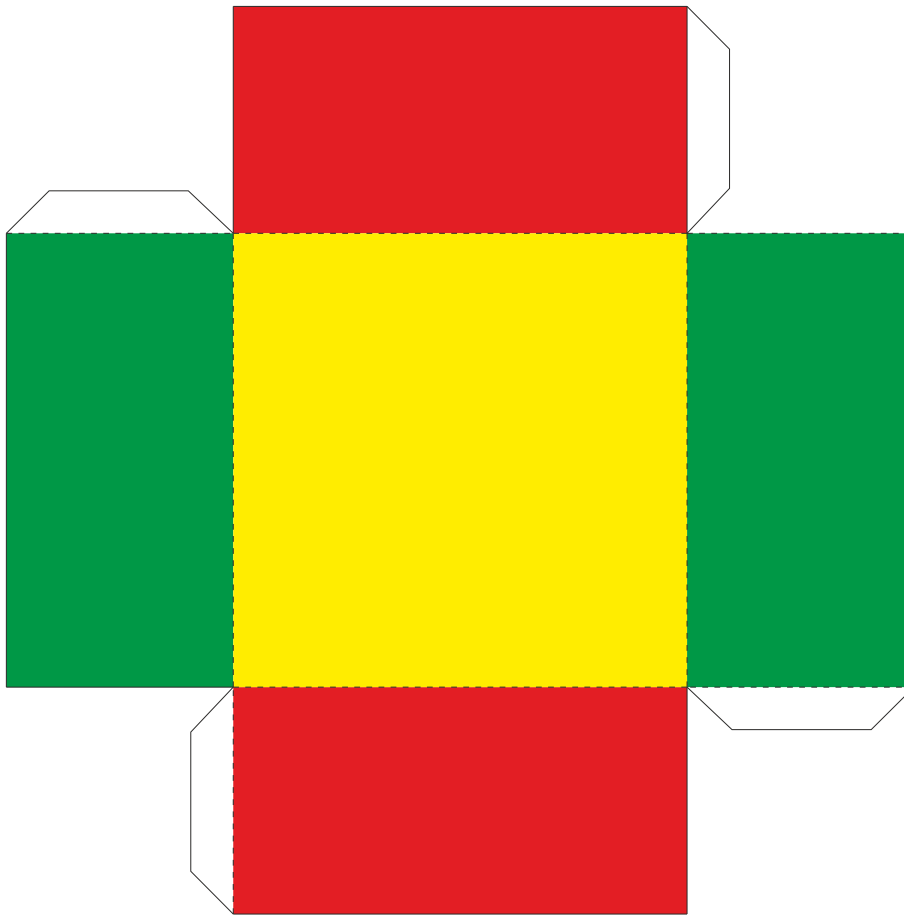
Dodecahedron divided in two parts  
with a Cube inside (part 1)



Dodecahedron divided in two parts  
with a Cube inside (part 2)



Dodecahedron divided in two parts  
with a Cube inside (part 3 and 4))



Dodecahedron divided in two parts  
with a Cube inside (cube))

