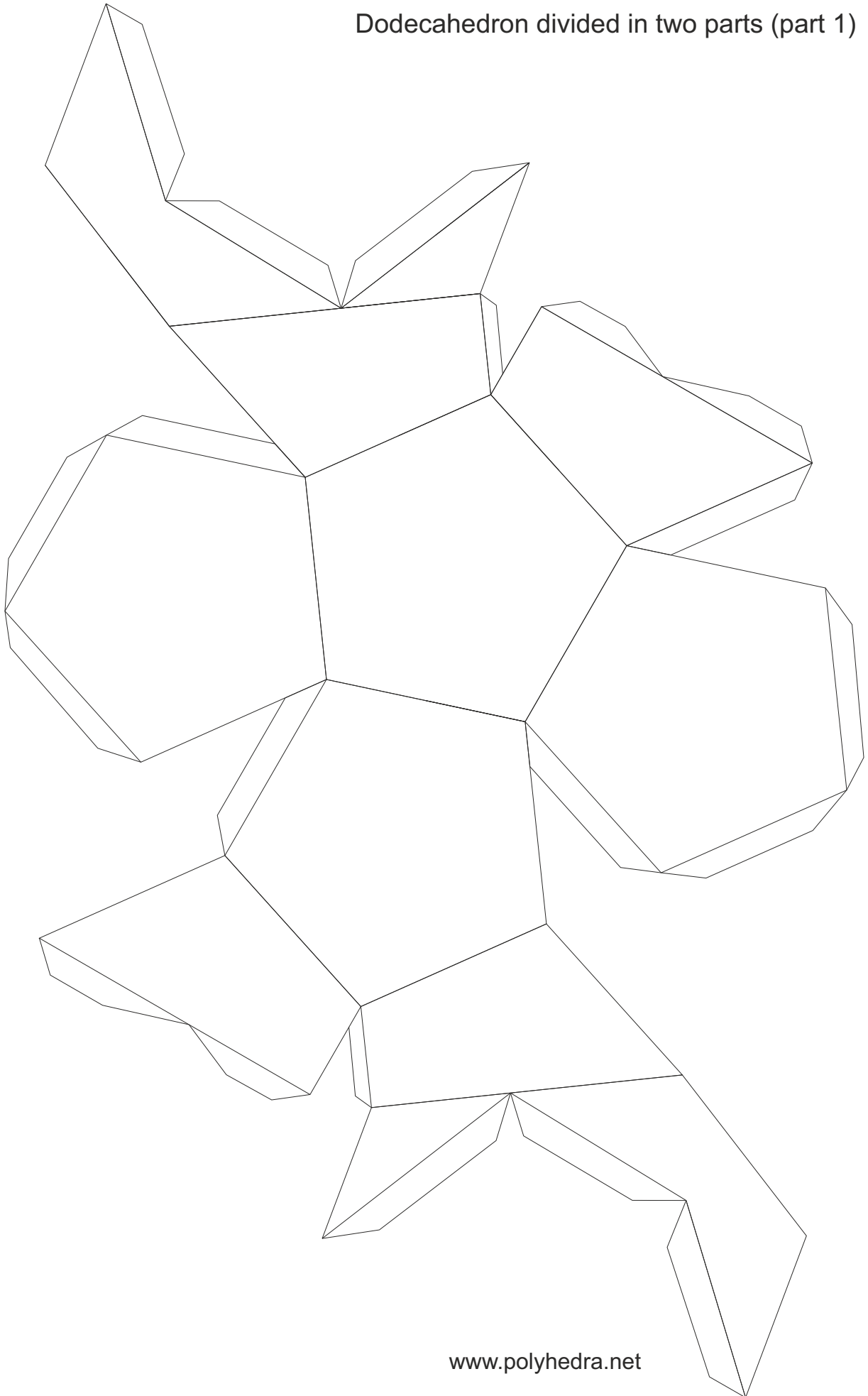


**Paper Models of Polyhedra
Collection 7 uncolored:
Platonic solids with duals inside**

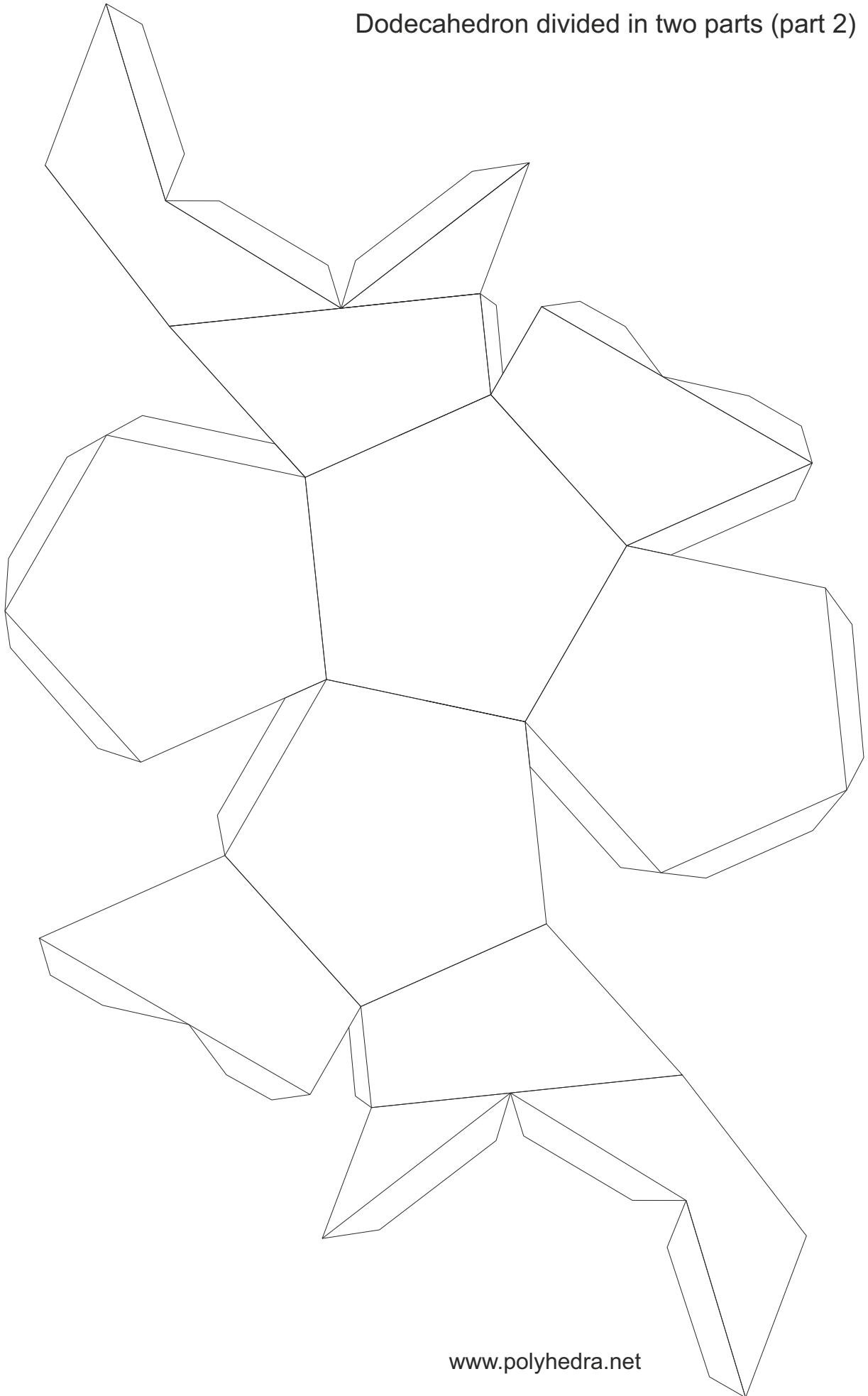
- Dodecahedron in two parts with a Icosahedron inside
- Cube in two parts with a Octahedron inside
- Octahedron in two parts with a Cube Inside
- Icosahedron in two parts with a Dodecahedron inside
- Tetrahedron in two parts with a Tetrahedron inside
- Dodecahedron in two parts with a Cube inside (no duals)

www.polyhedra.net

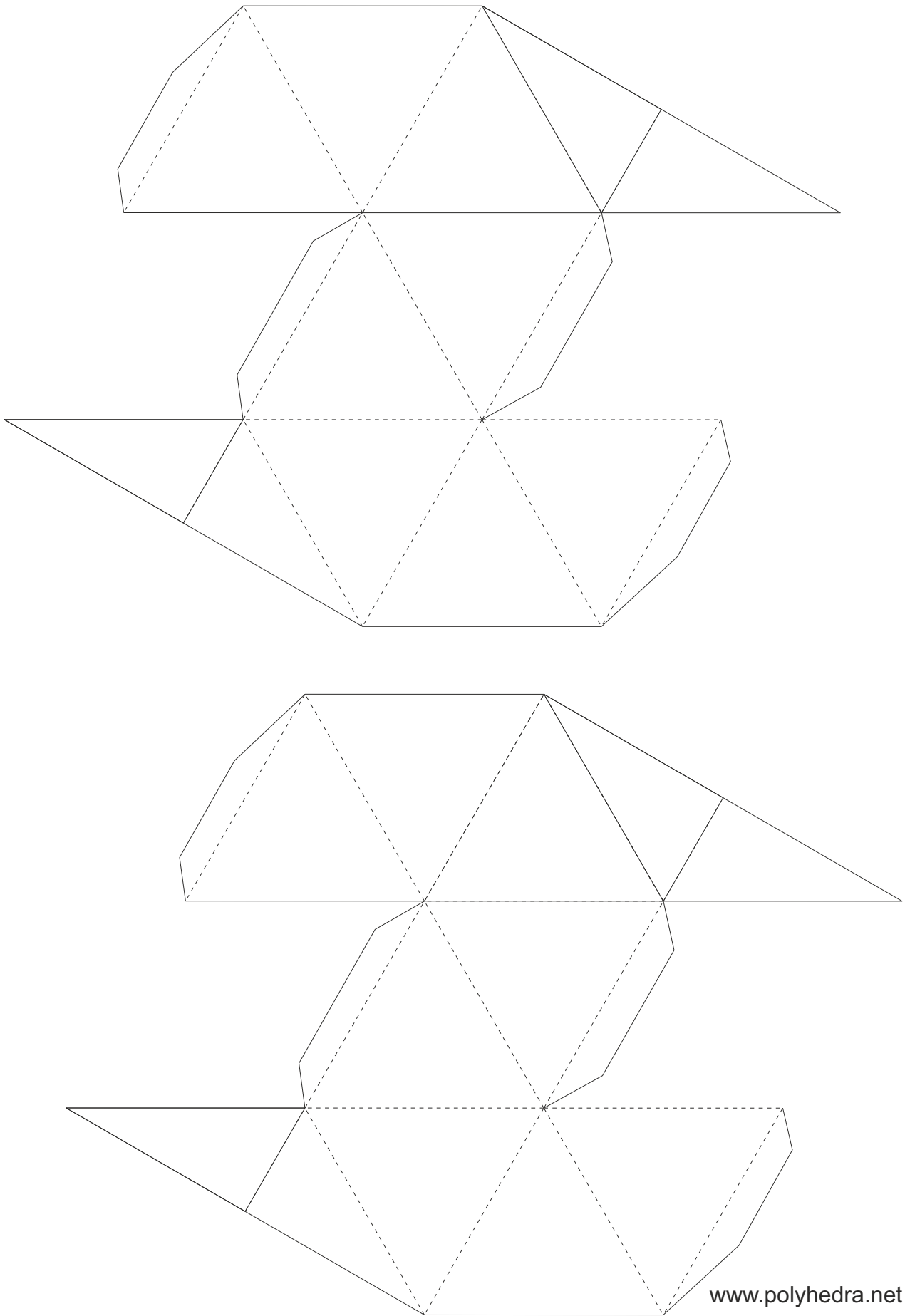
Dodecahedron divided in two parts (part 1)



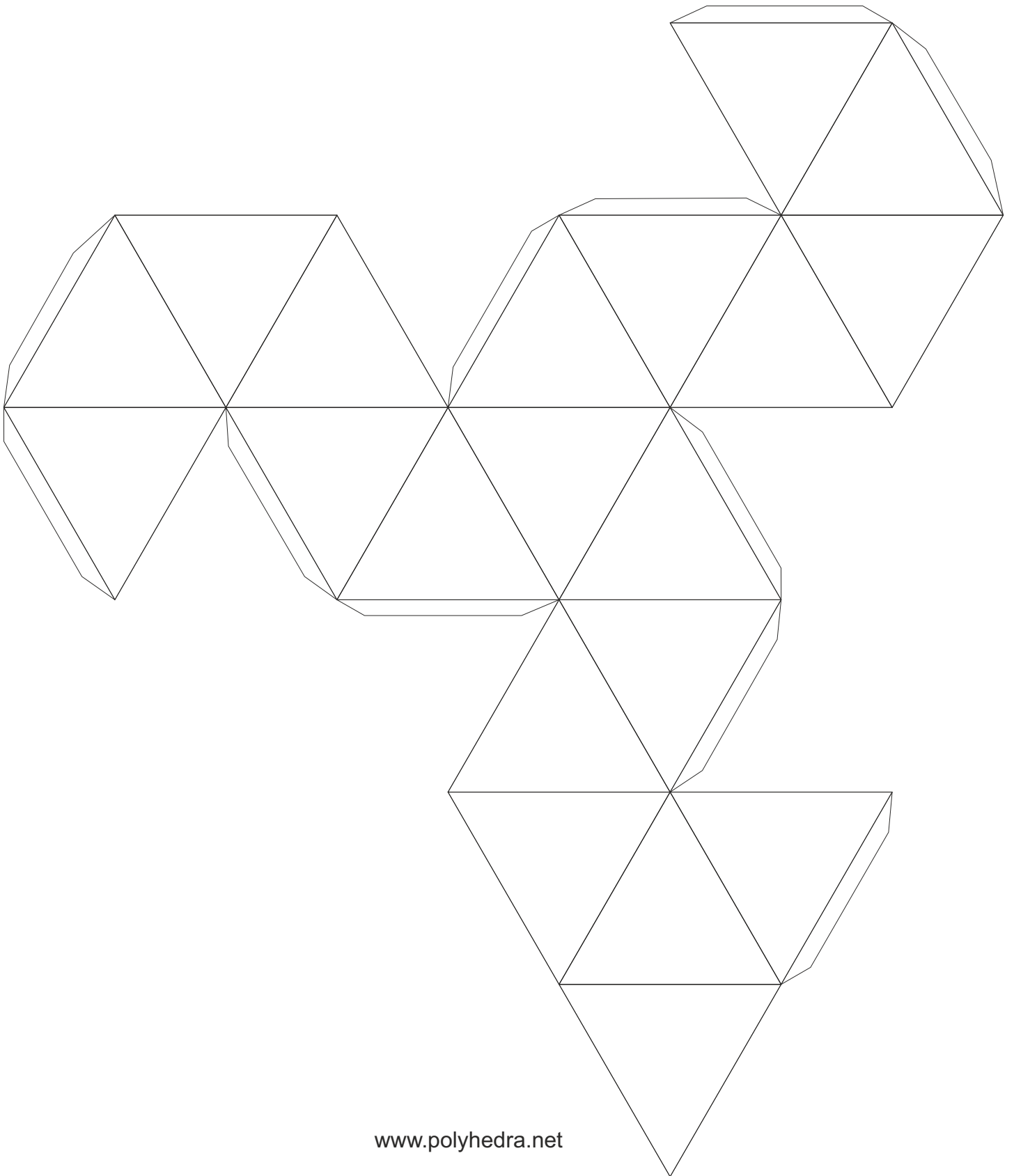
Dodecahedron divided in two parts (part 2)

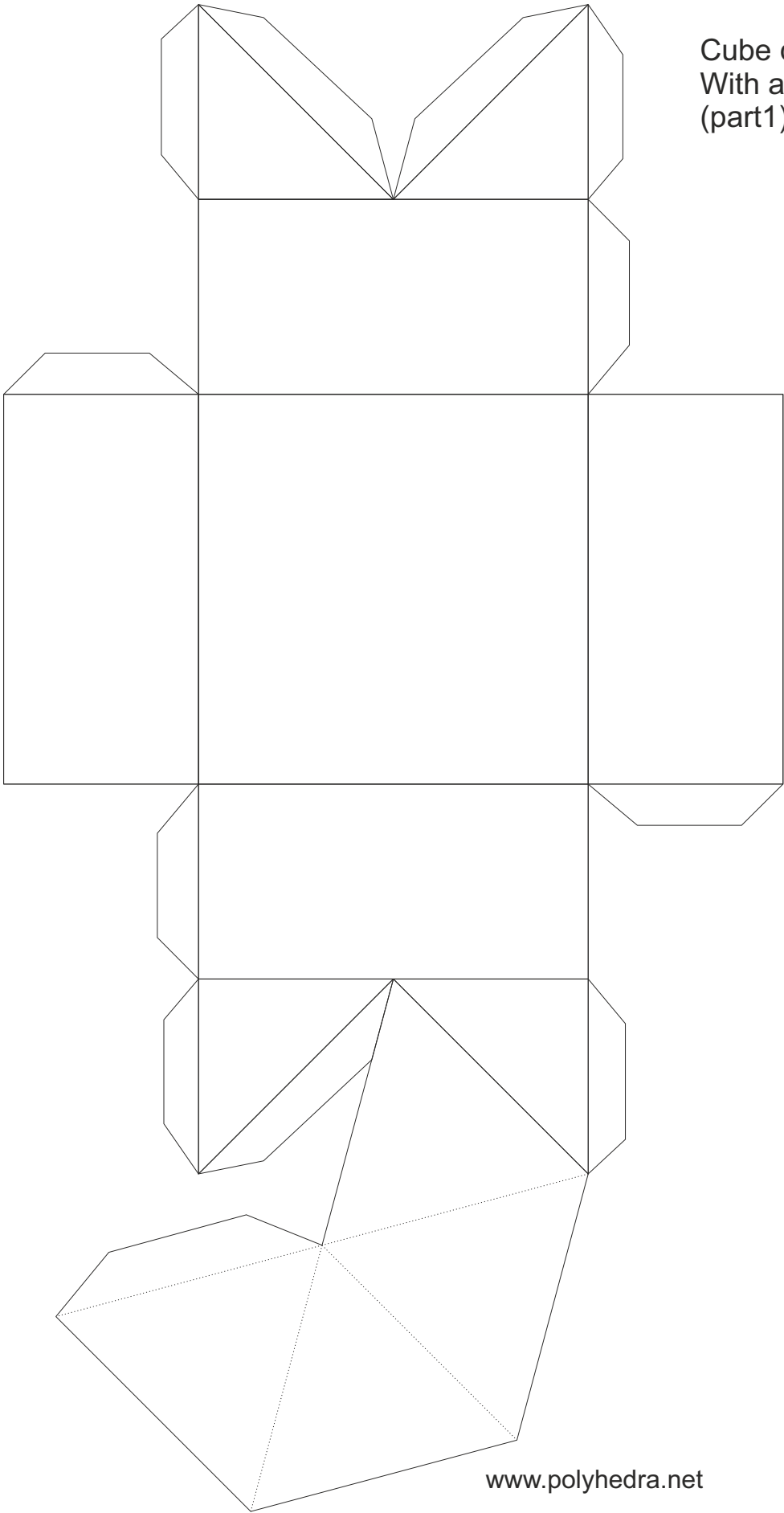


Icosahedral interior of the dodecahedron

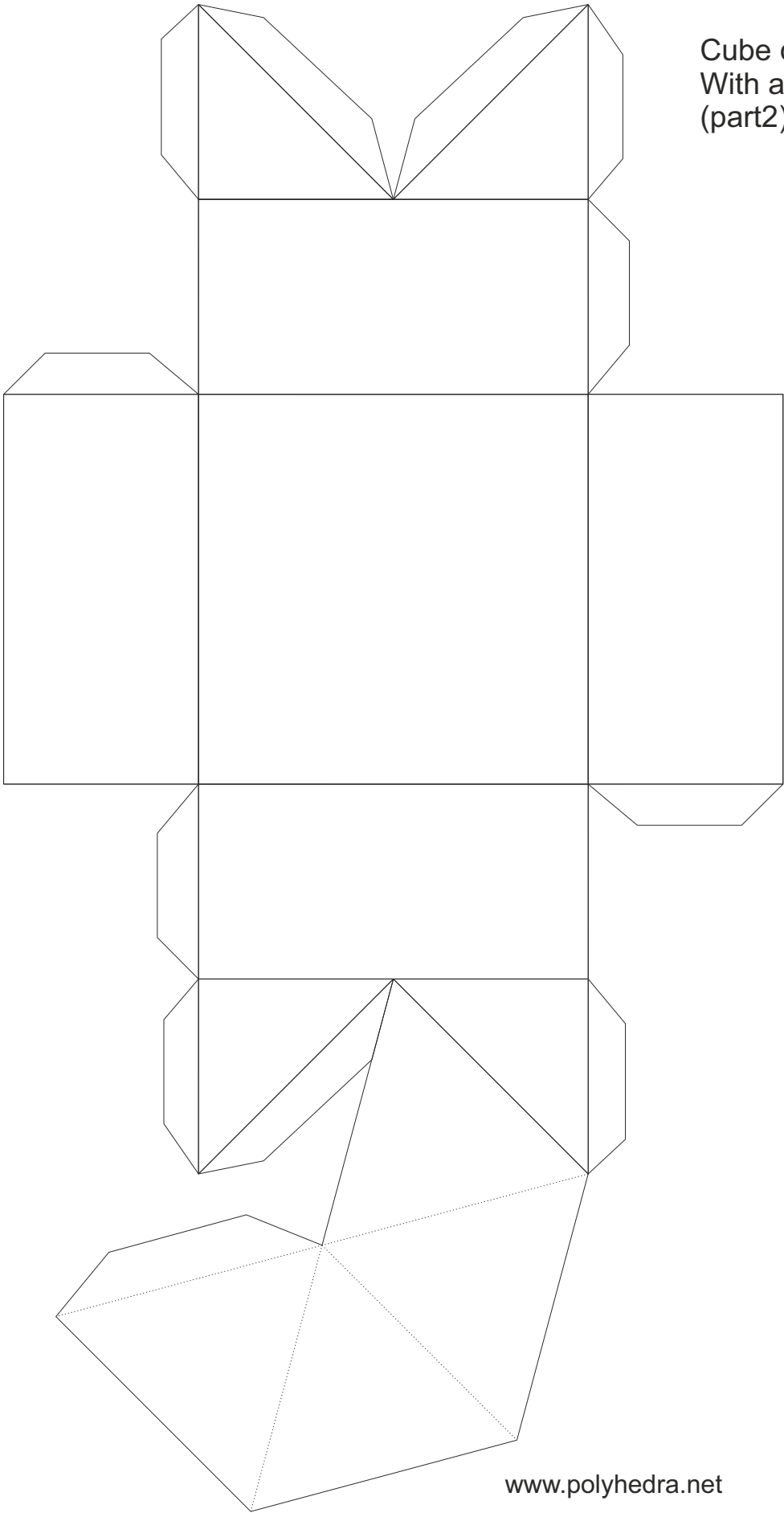


Icosahedron



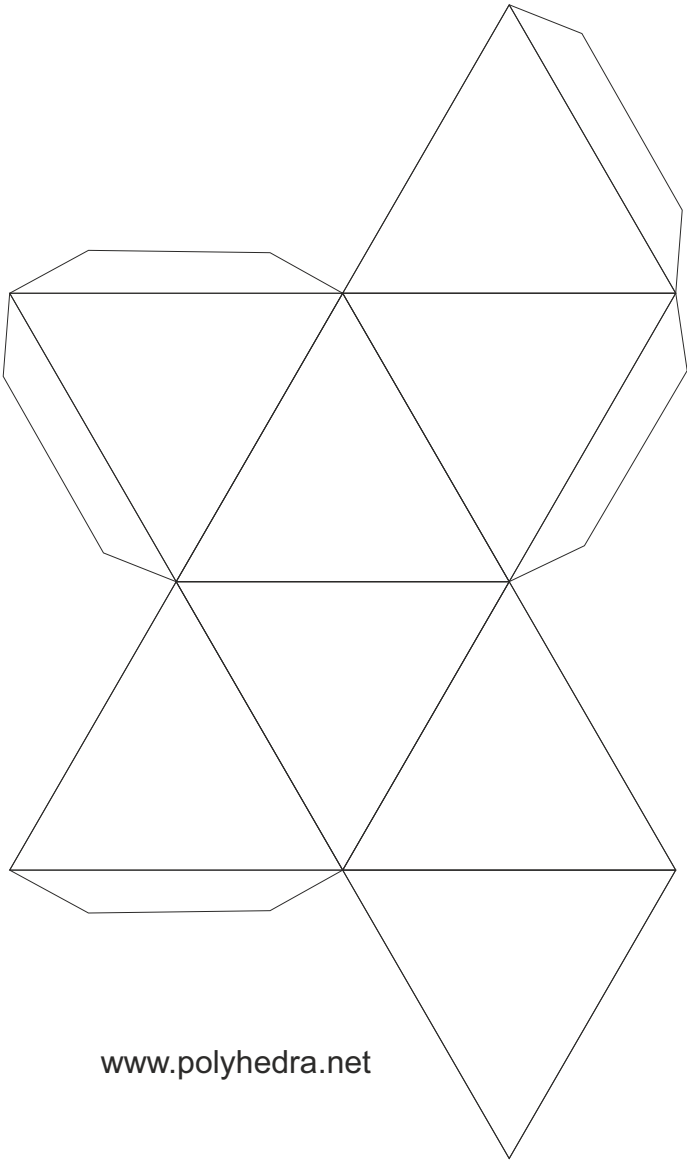


Cube divide in two parts
With a octhadron inside
(part1)



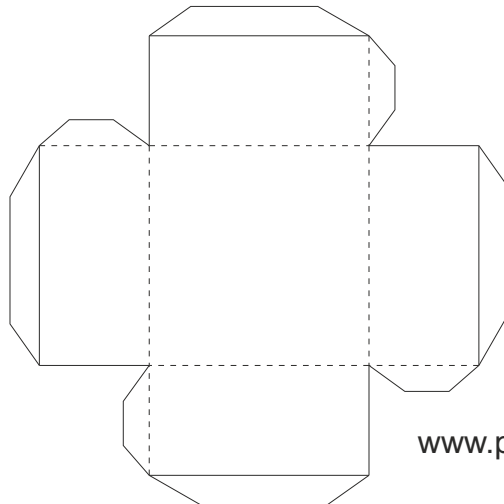
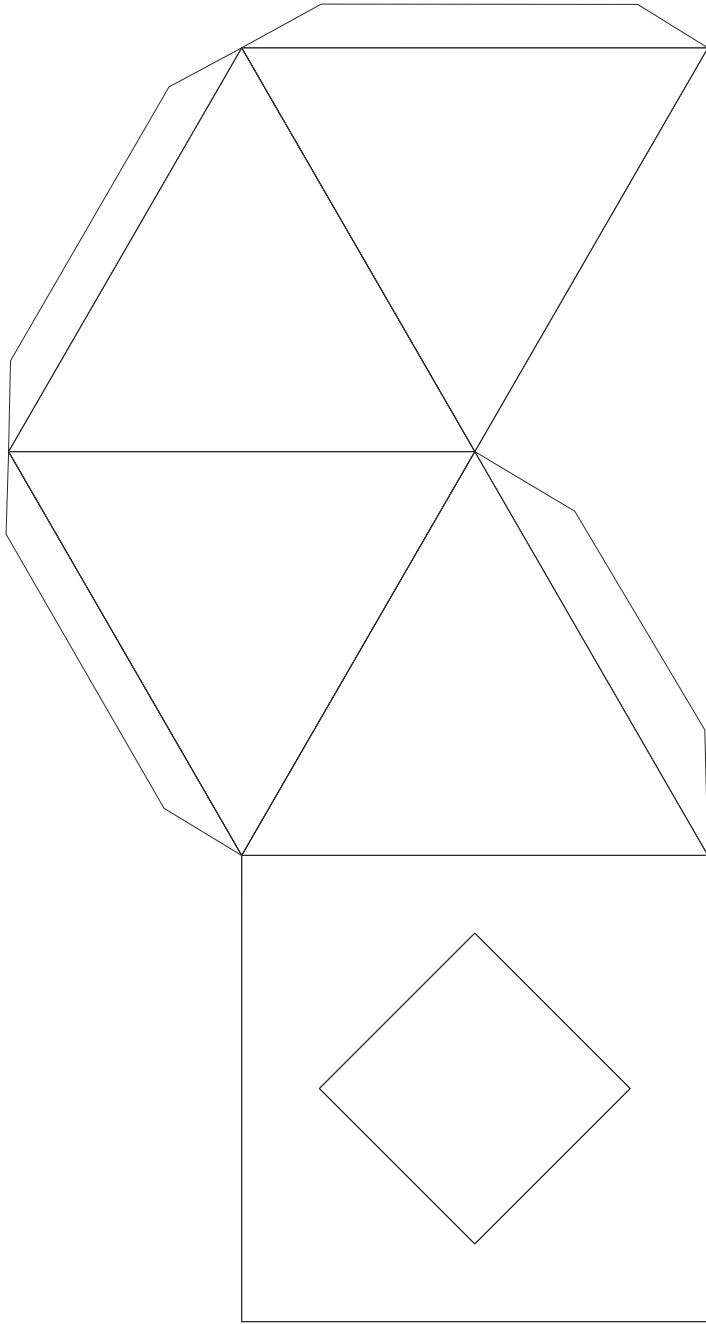
Cube divide in two parts
With a octhadron inside
(part2)

Octahedron:

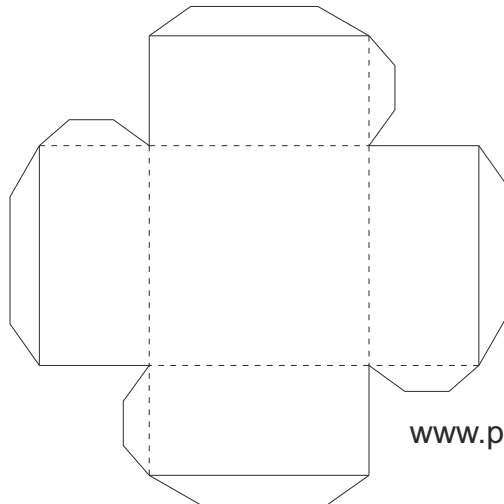
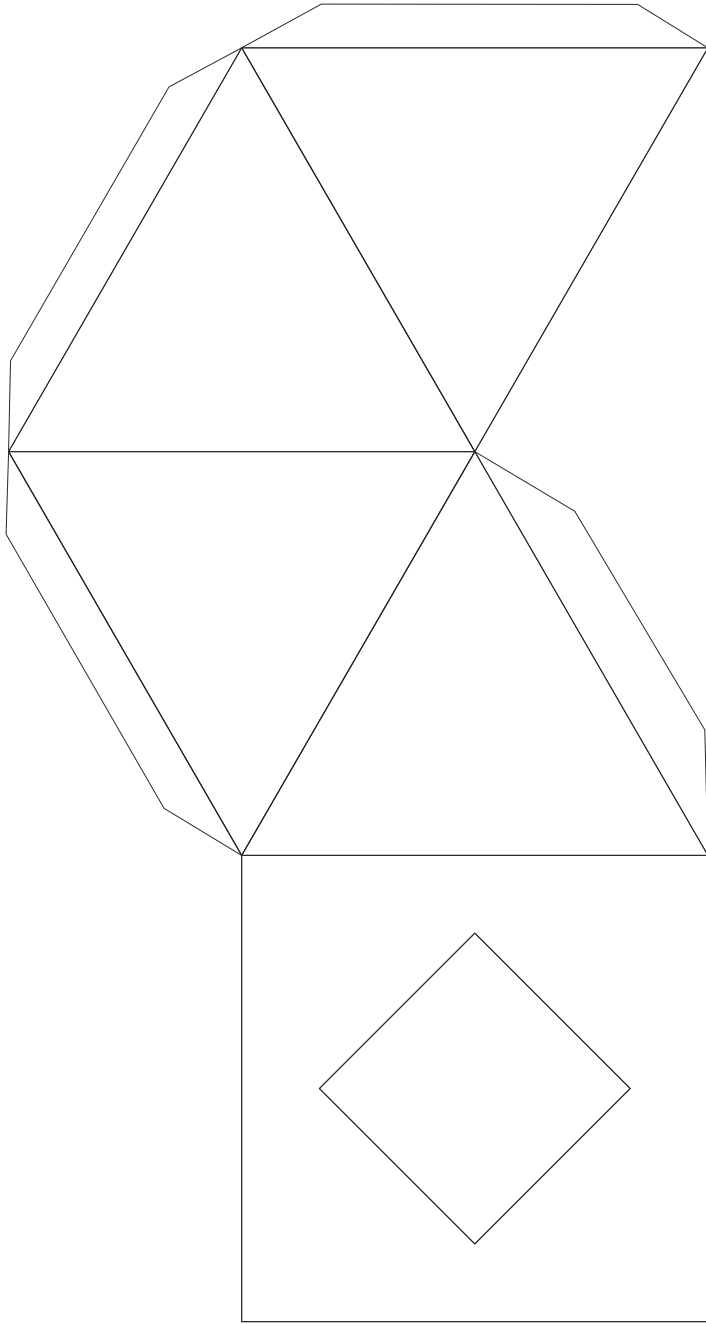


www.polyhedra.net

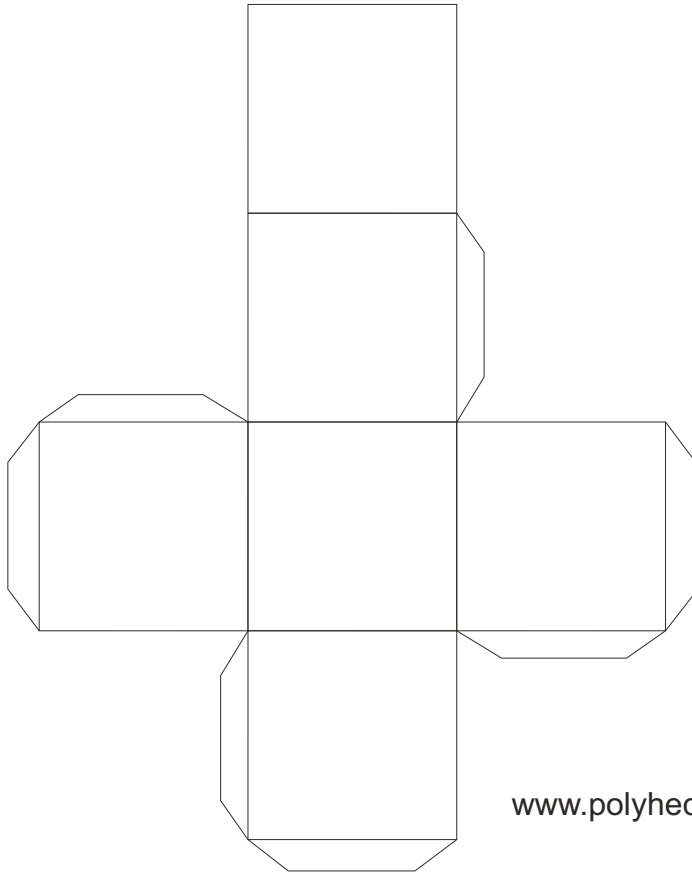
Octahedron with
Cube inside
(part 1)



Octahedron with
Cube inside
(part 2)

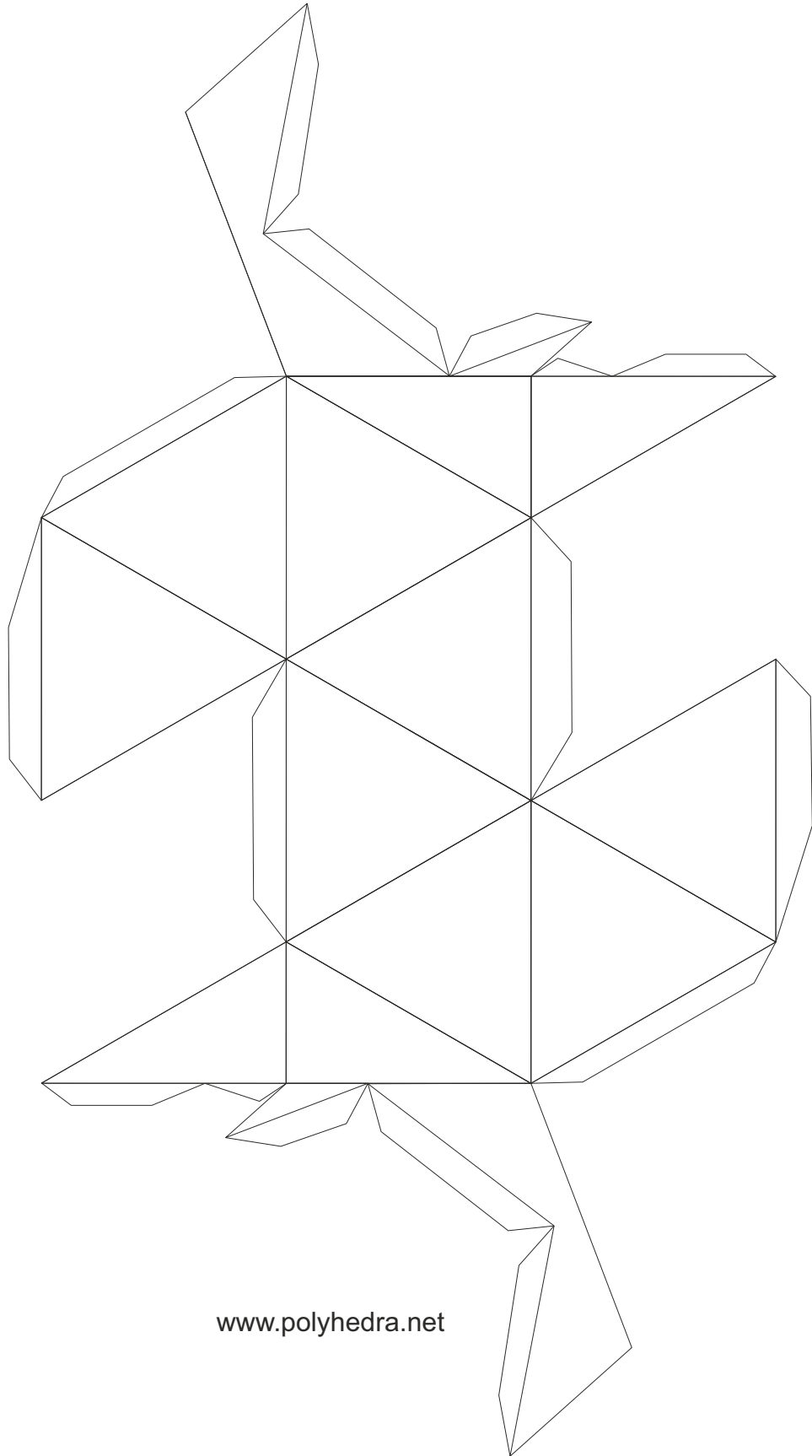


Octahedron with
Cube inside
(Cube)



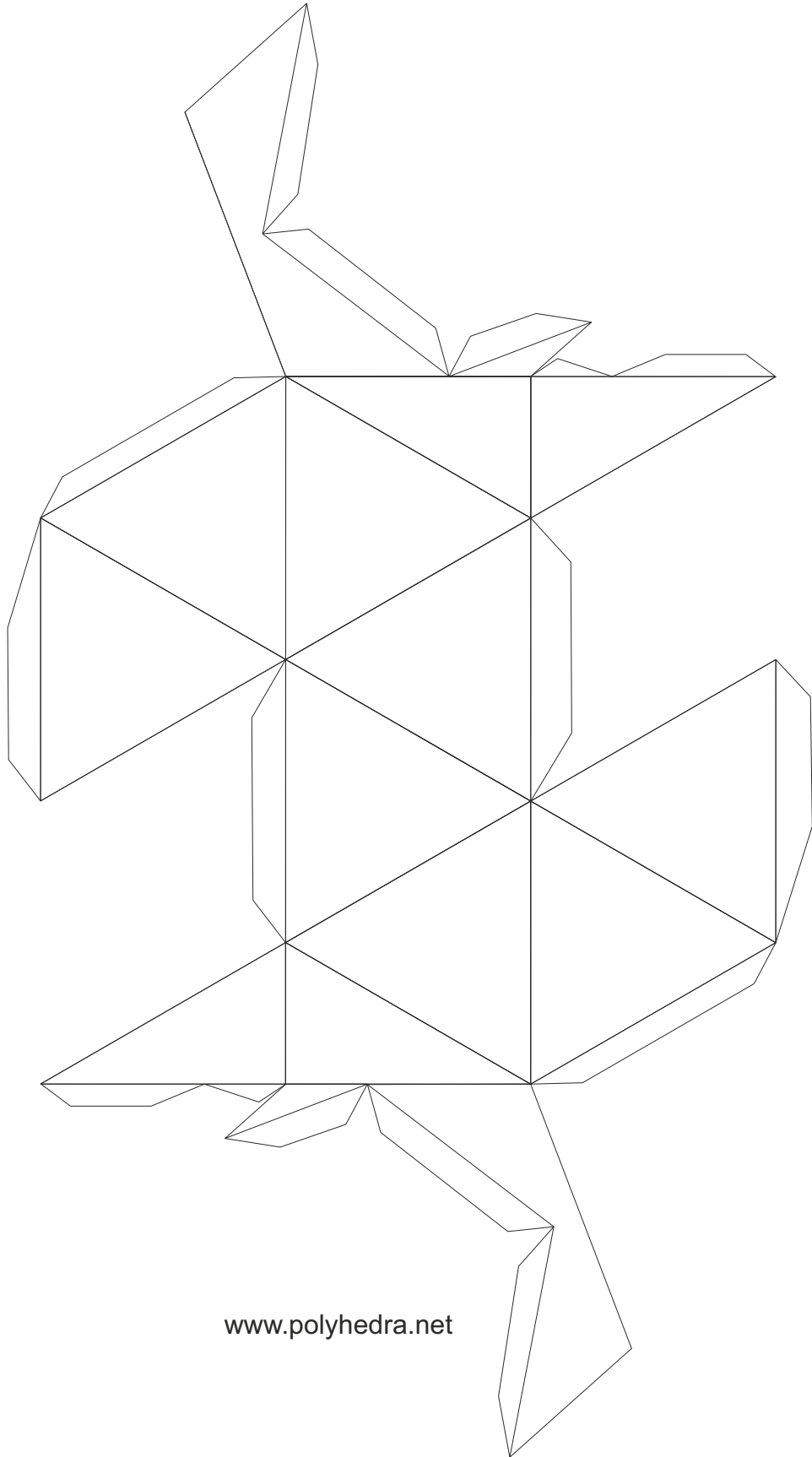
www.polyhedra.net

Icosahedron with Dodecahedron inside(part 1)



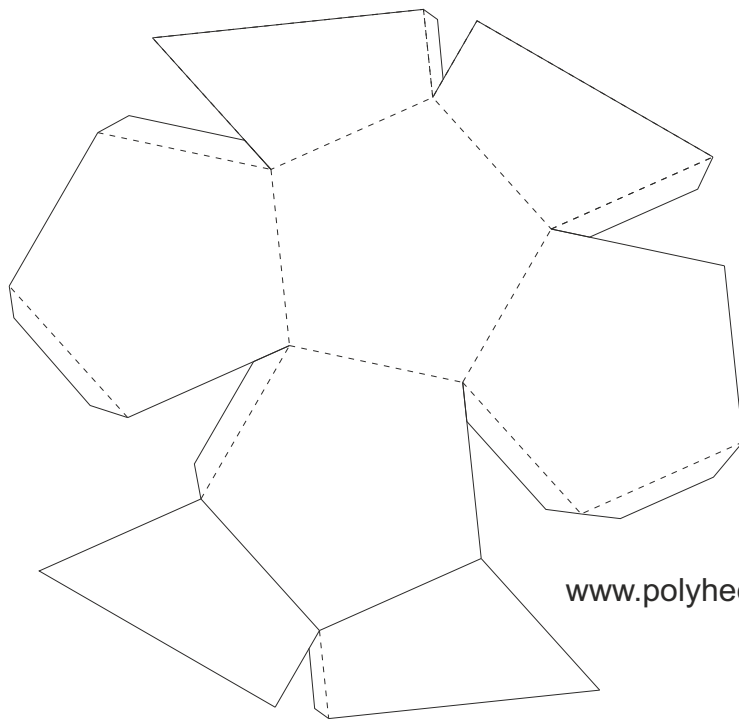
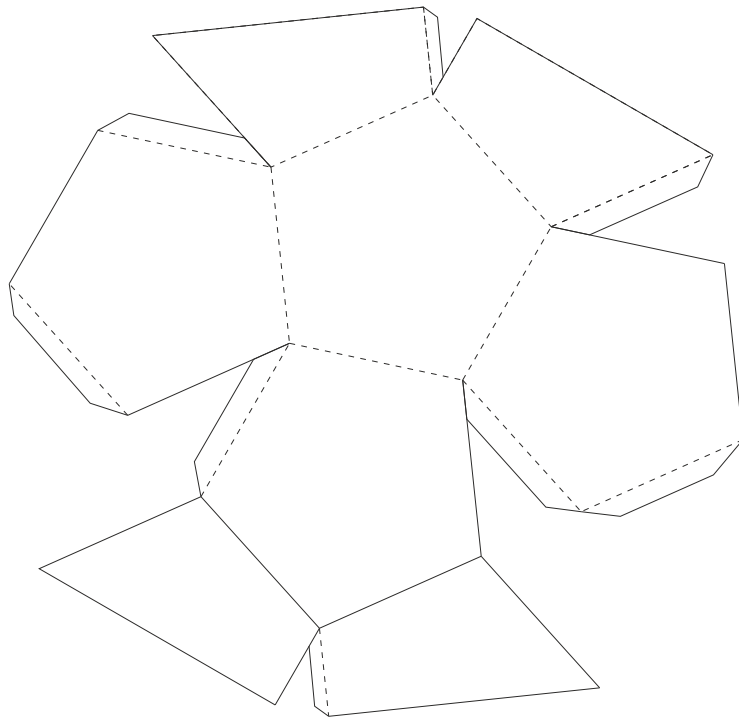
www.polyhedra.net

Icosahedron with Dodecahedron inside(part 2)

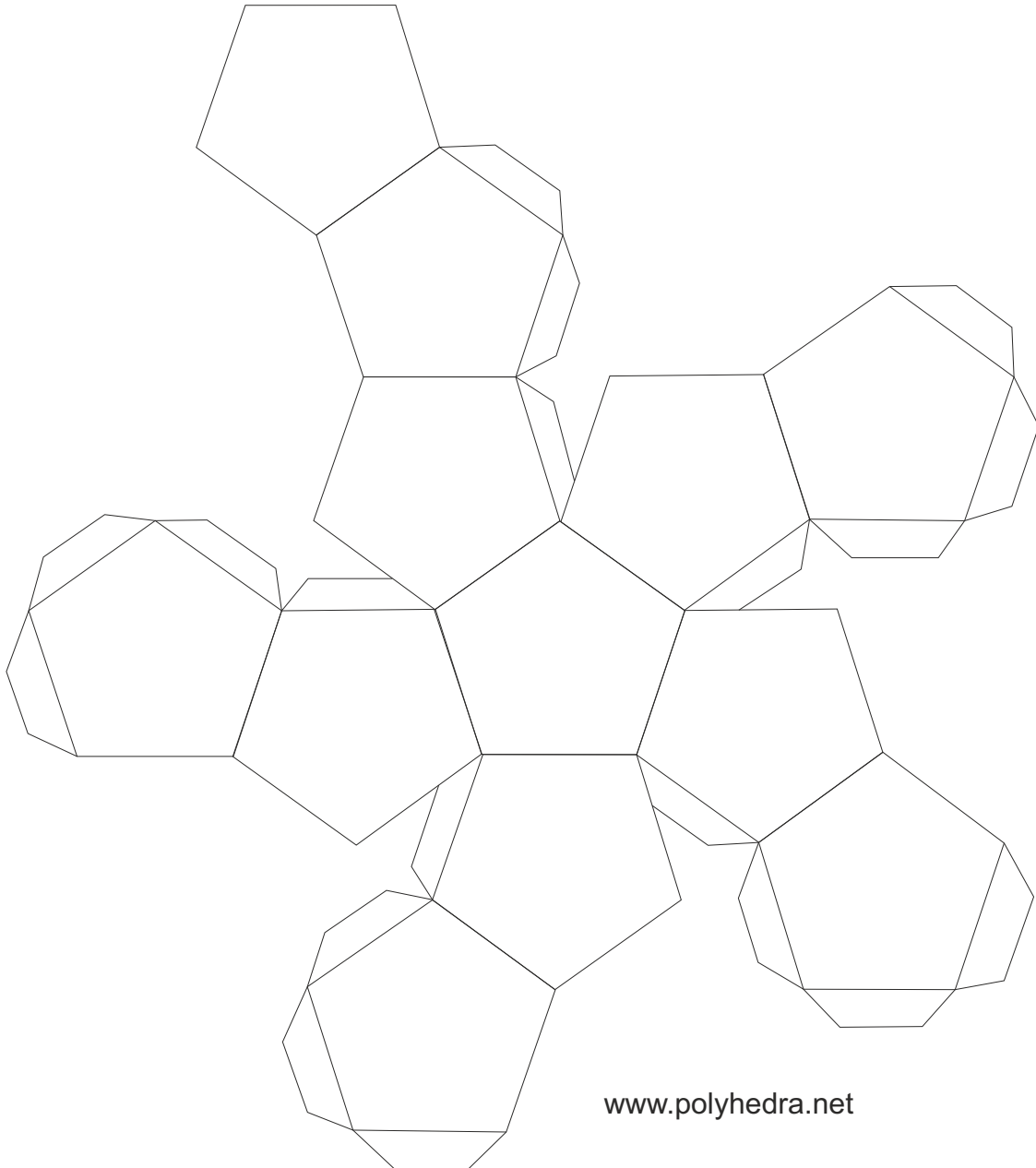


www.polyhedra.net

Icosahedron with Dodecahedron inside(part 3 and 4: interior of the icosahedron)

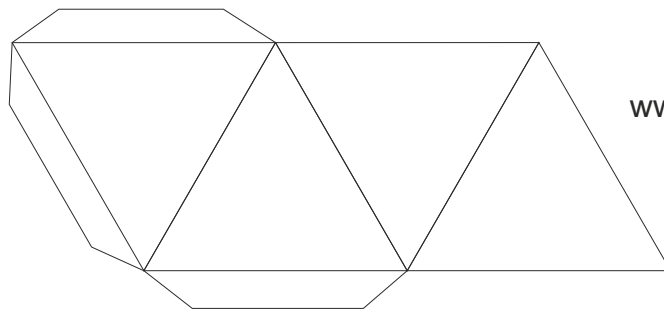
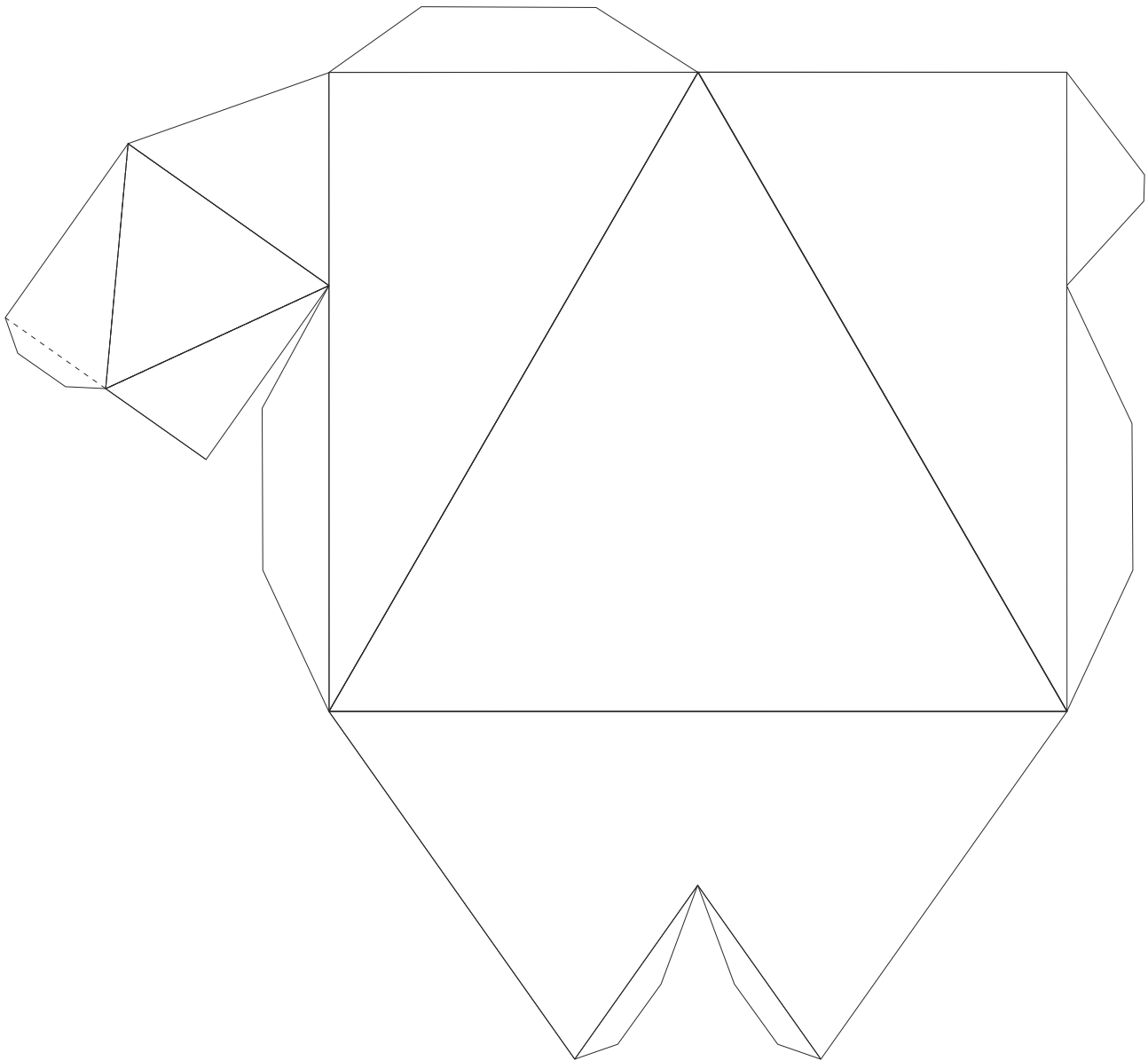


Dodecahedron



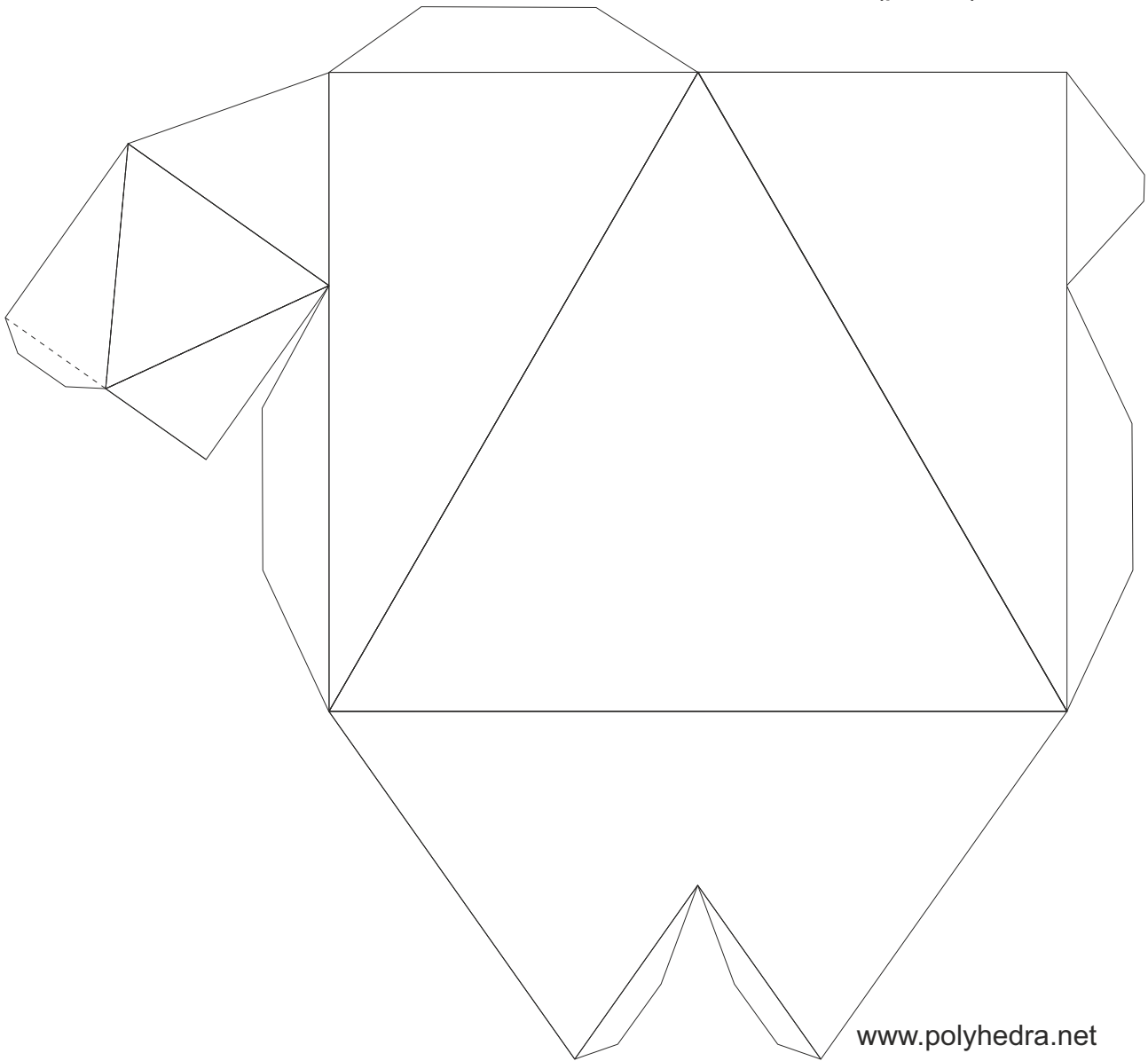
www.polyhedra.net

Tetrahedron in two parts
with a Tetrahedron inside (part 1 and a Tetrahedron)

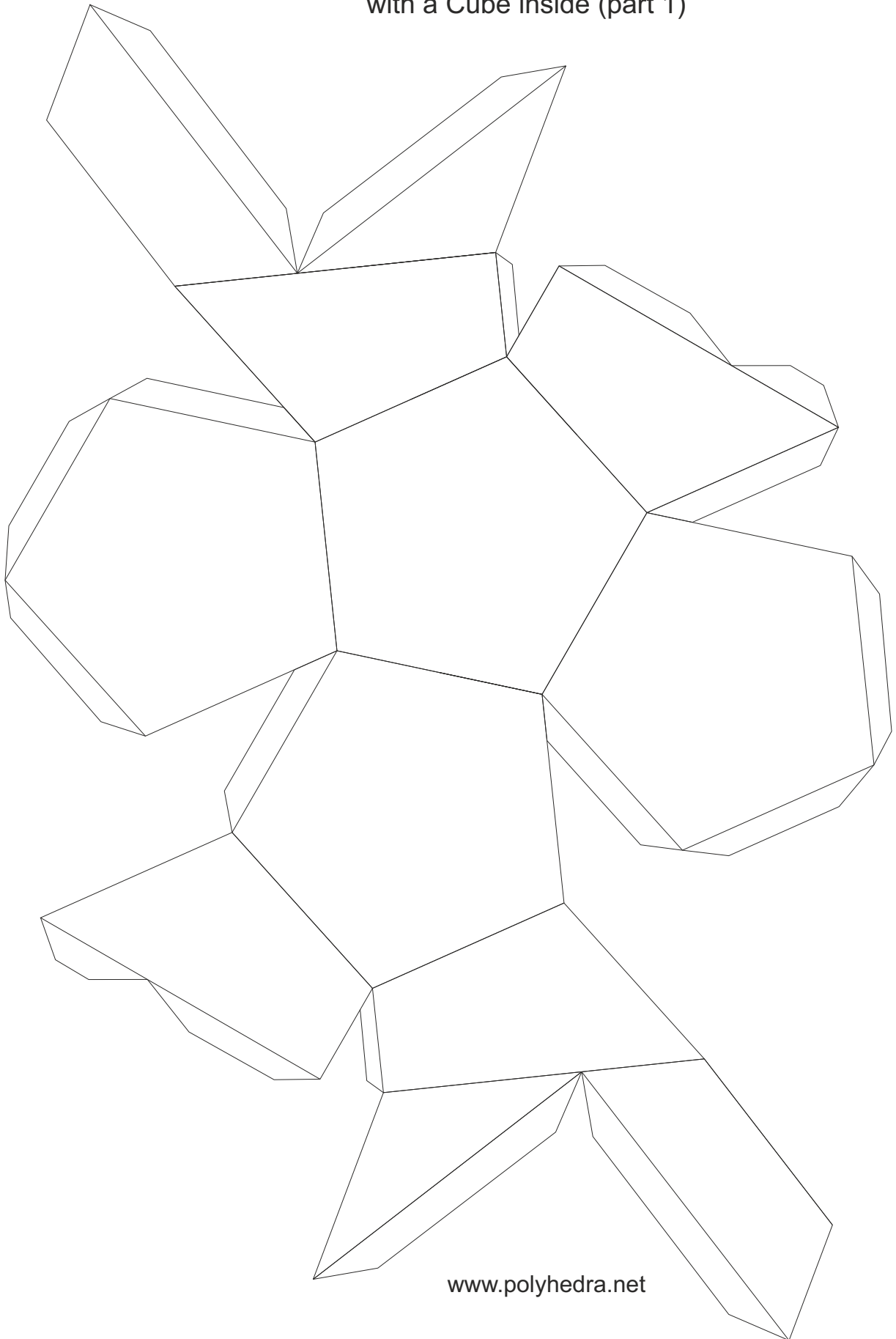


www.polyhedra.net

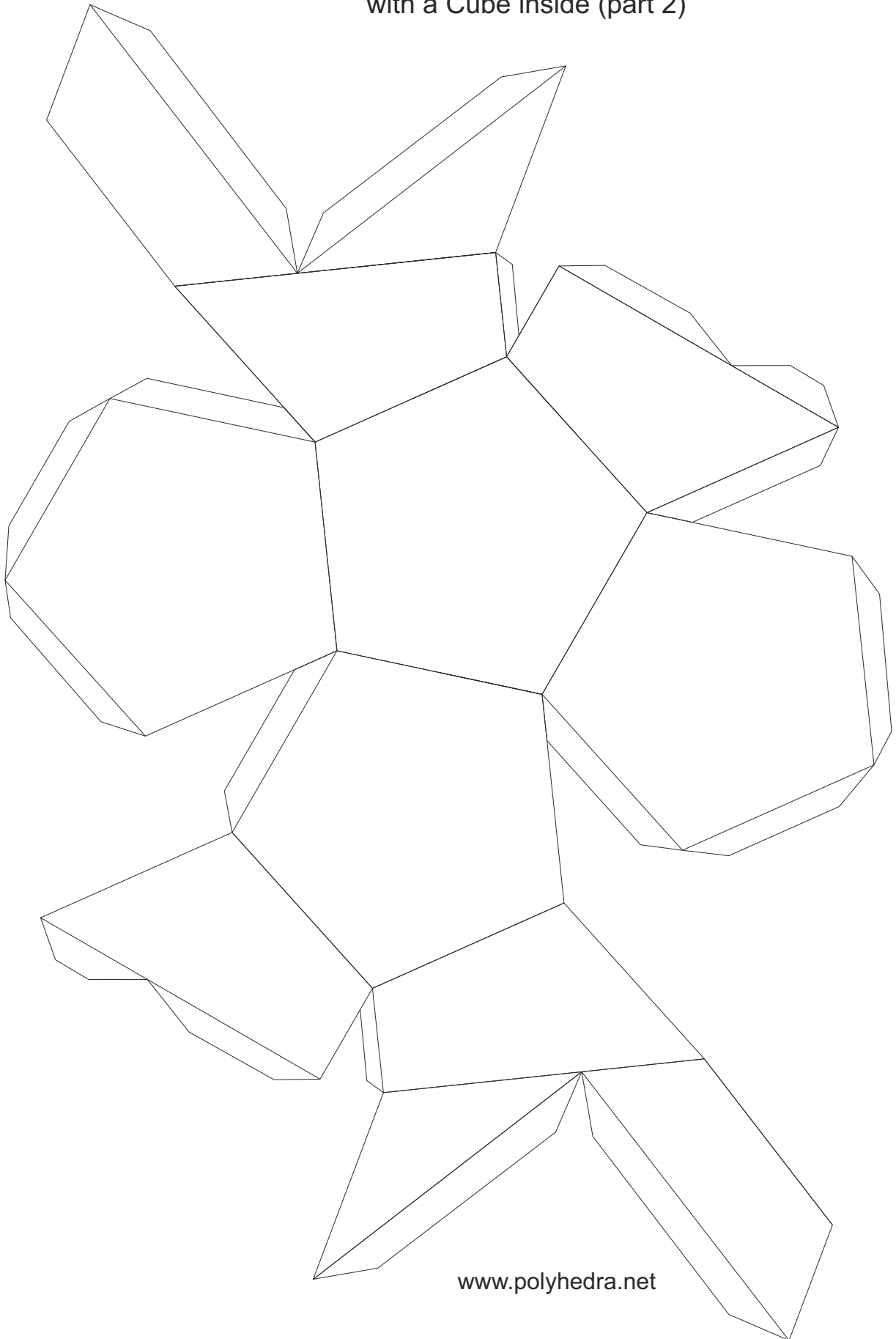
Tetrahedron in two parts
with a Tetrahedron inside (part 2)



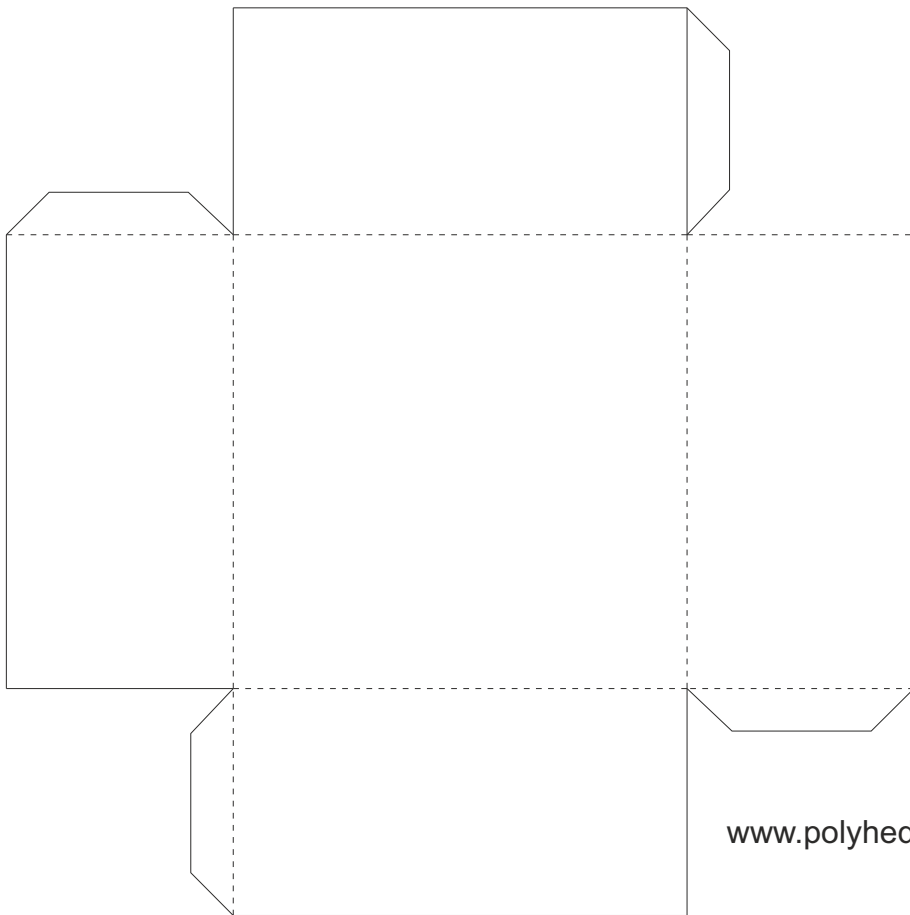
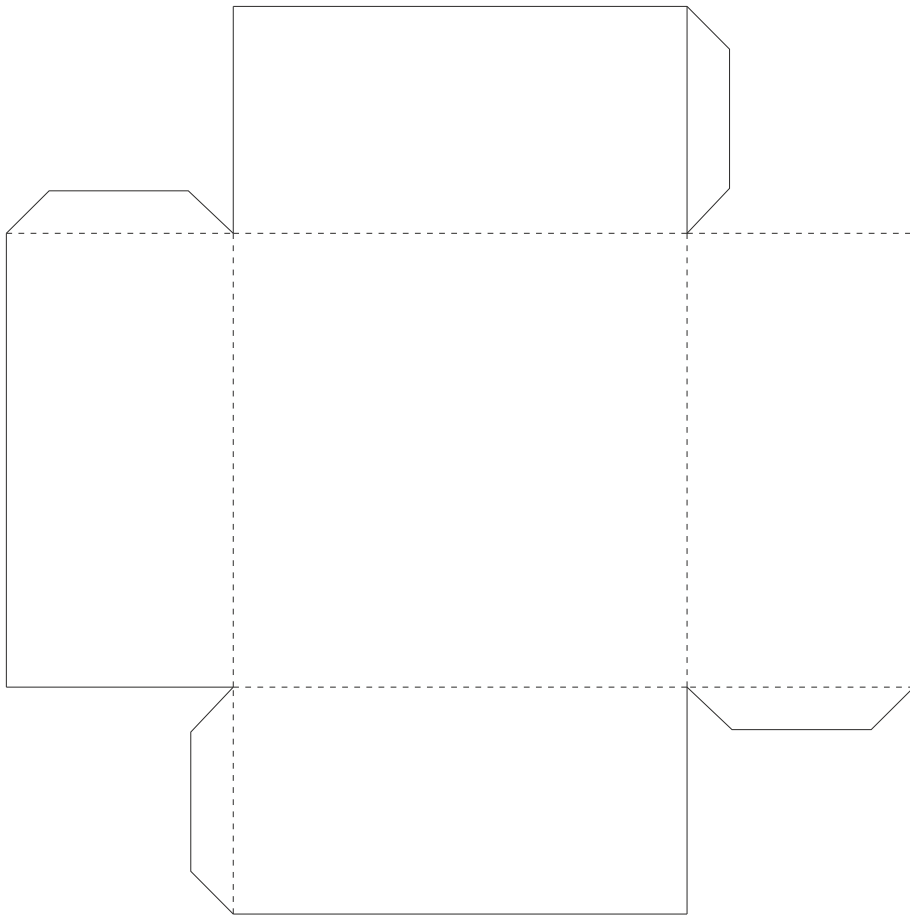
Dodecahedron divided in two parts
with a Cube inside (part 1)



Dodecahedron divided in two parts
with a Cube inside (part 2)



Dodecahedron divided in two parts
with a Cube inside (part 3 and 4))



Dodecahedron divided in two parts
with a Cube inside (cube))

