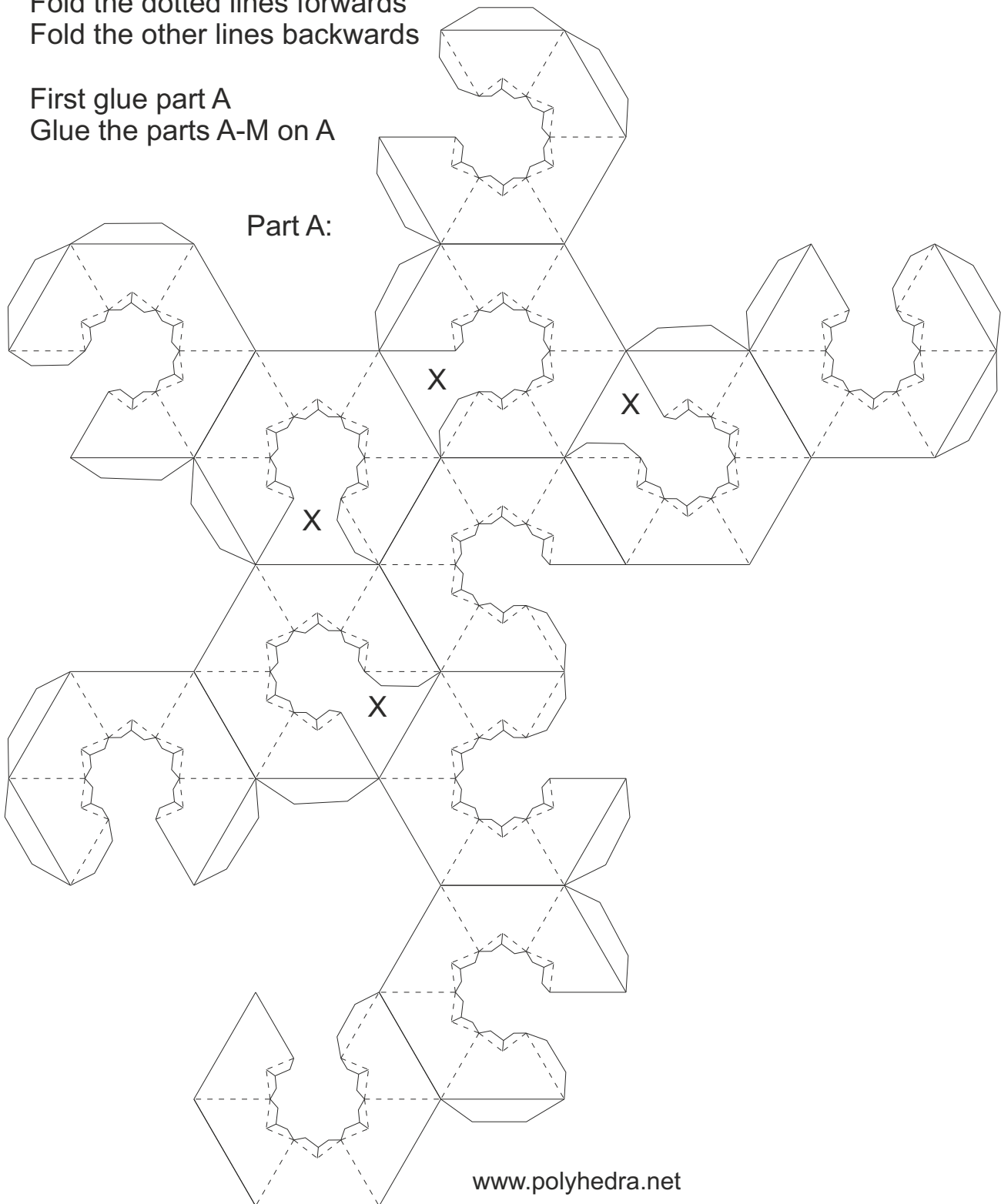


# Sixth Stellation of the Icosahedron

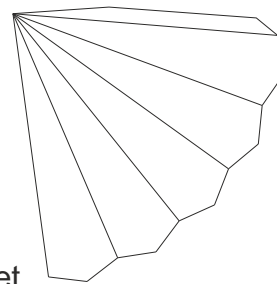
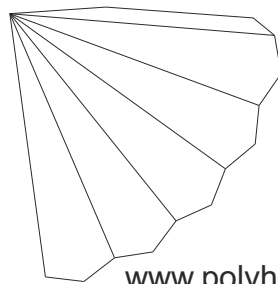
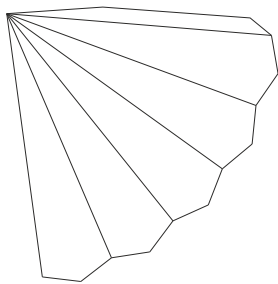
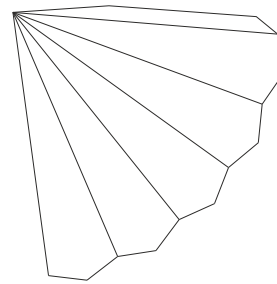
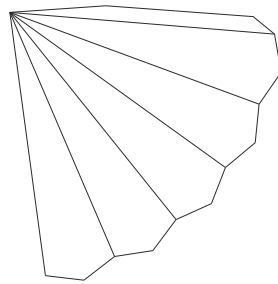
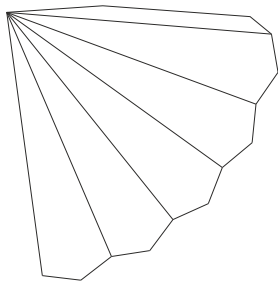
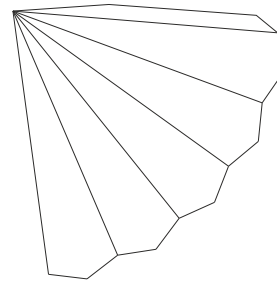
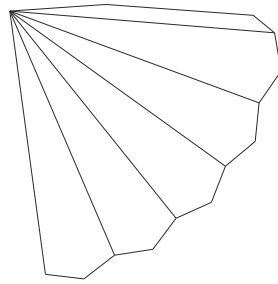
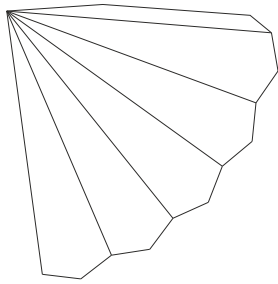
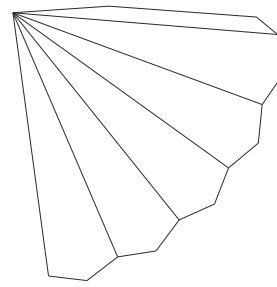
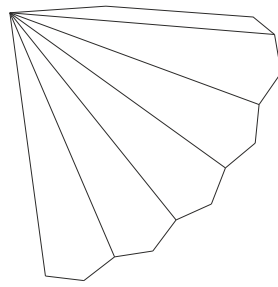
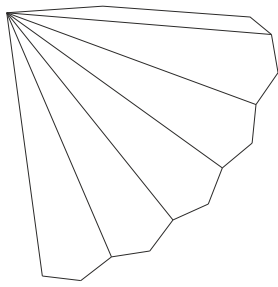
(small version)

Fold the dotted lines forwards  
Fold the other lines backwards

First glue part A  
Glue the parts A-M on A



# Parts B-M

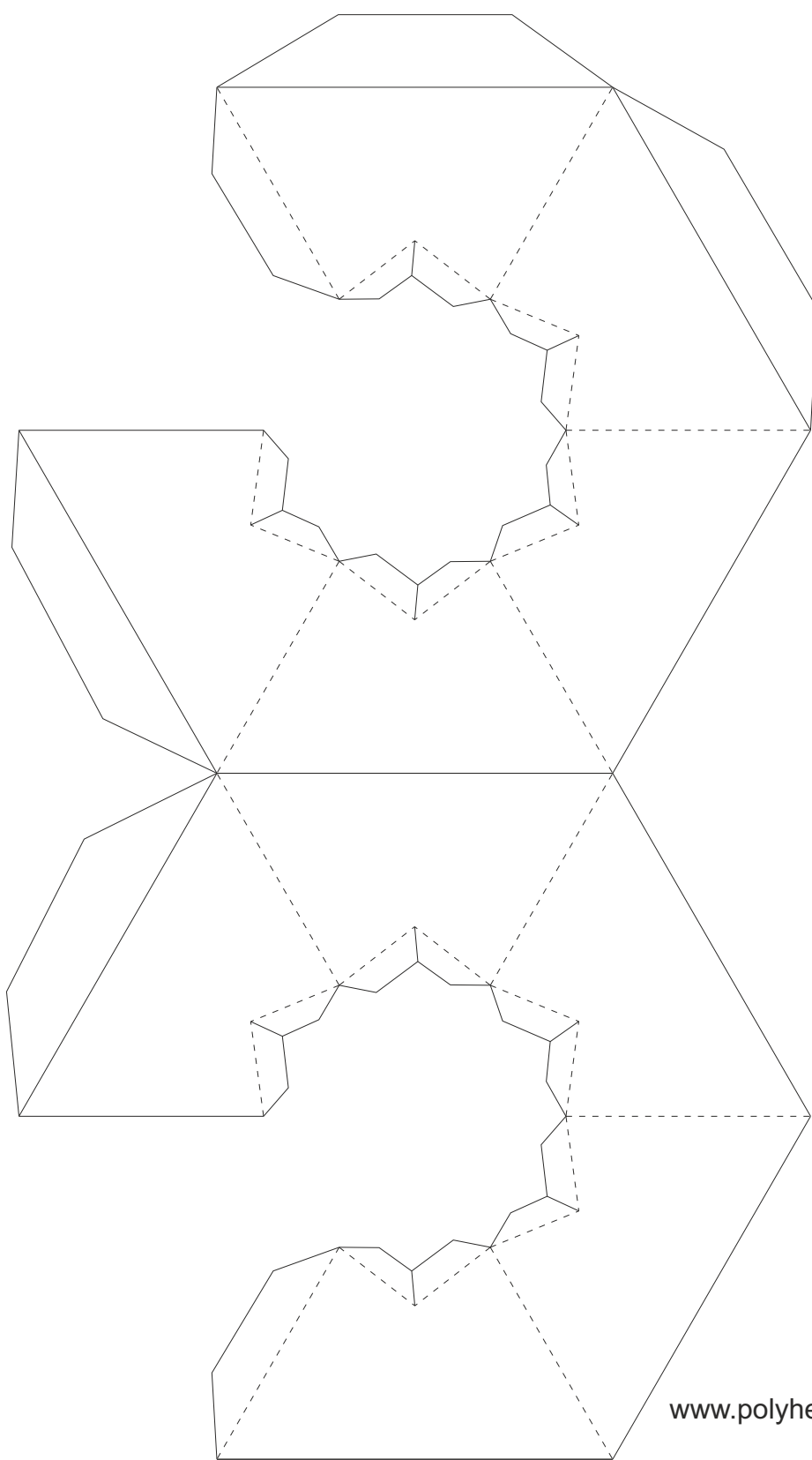


# Sixth Stellation of the Icosahedron (large version)

First glue the parts A until F

Glue the 12 other parts on the ABCDEF

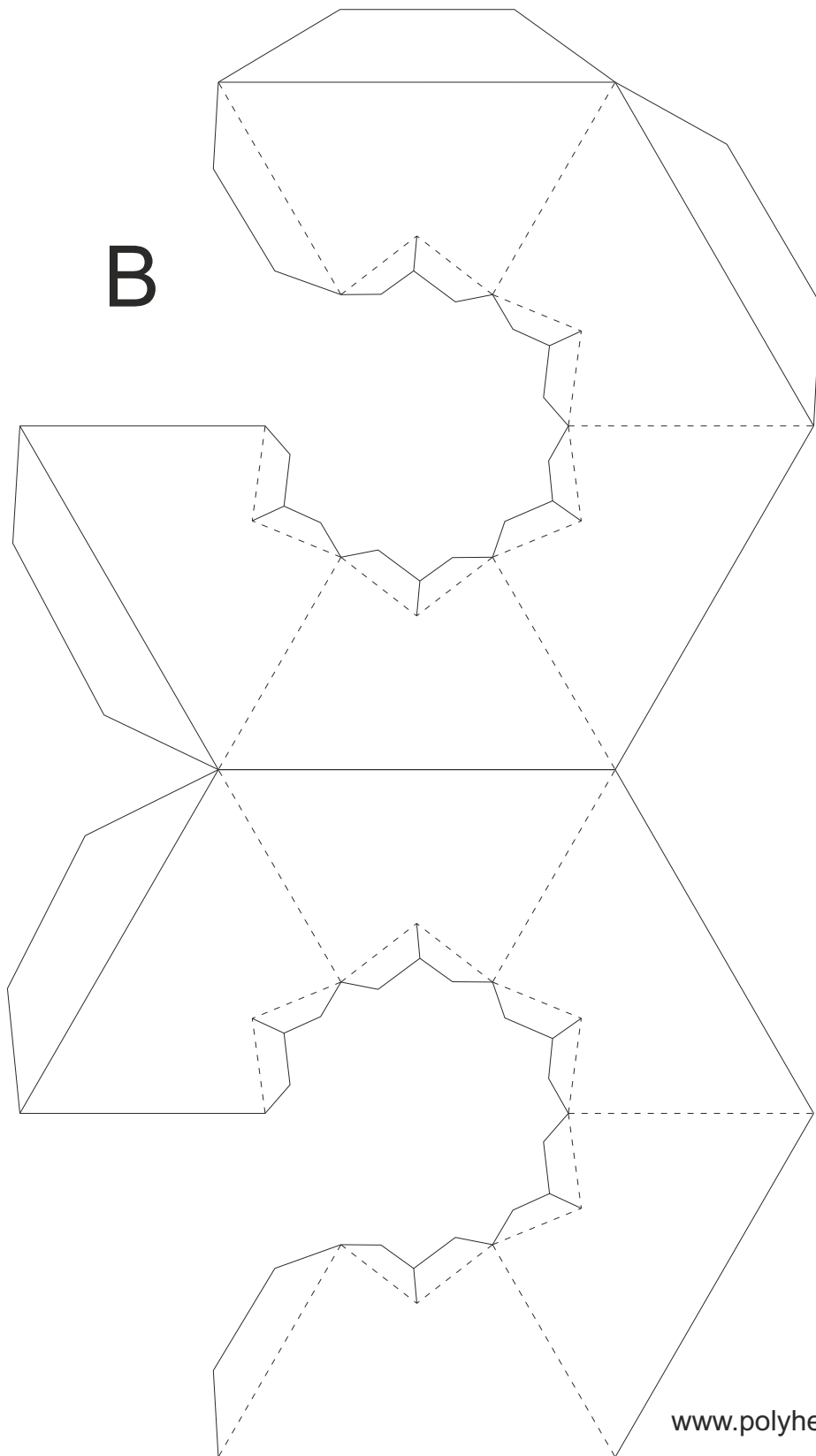




A

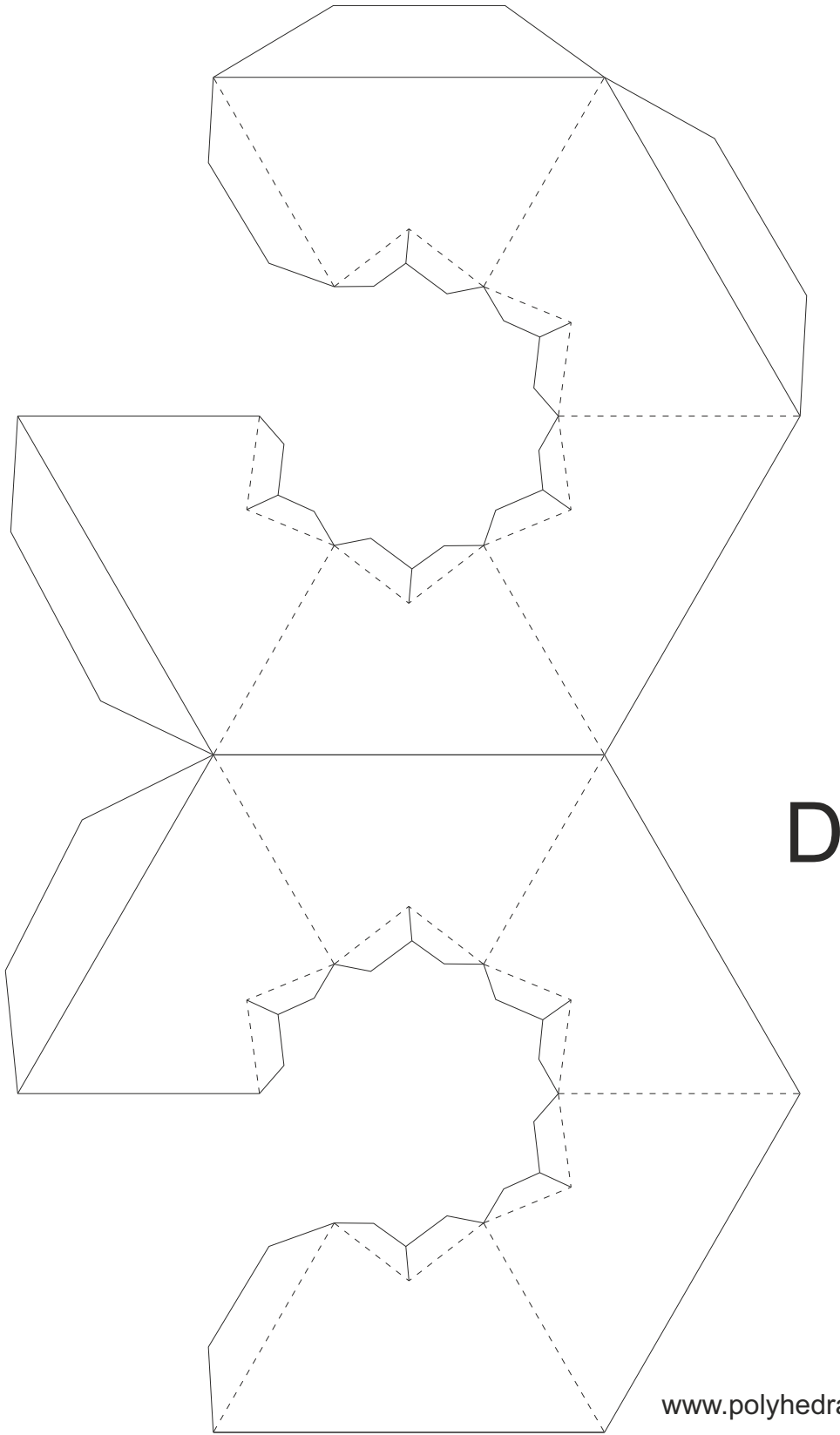
B

[www.polyhedra.net](http://www.polyhedra.net)



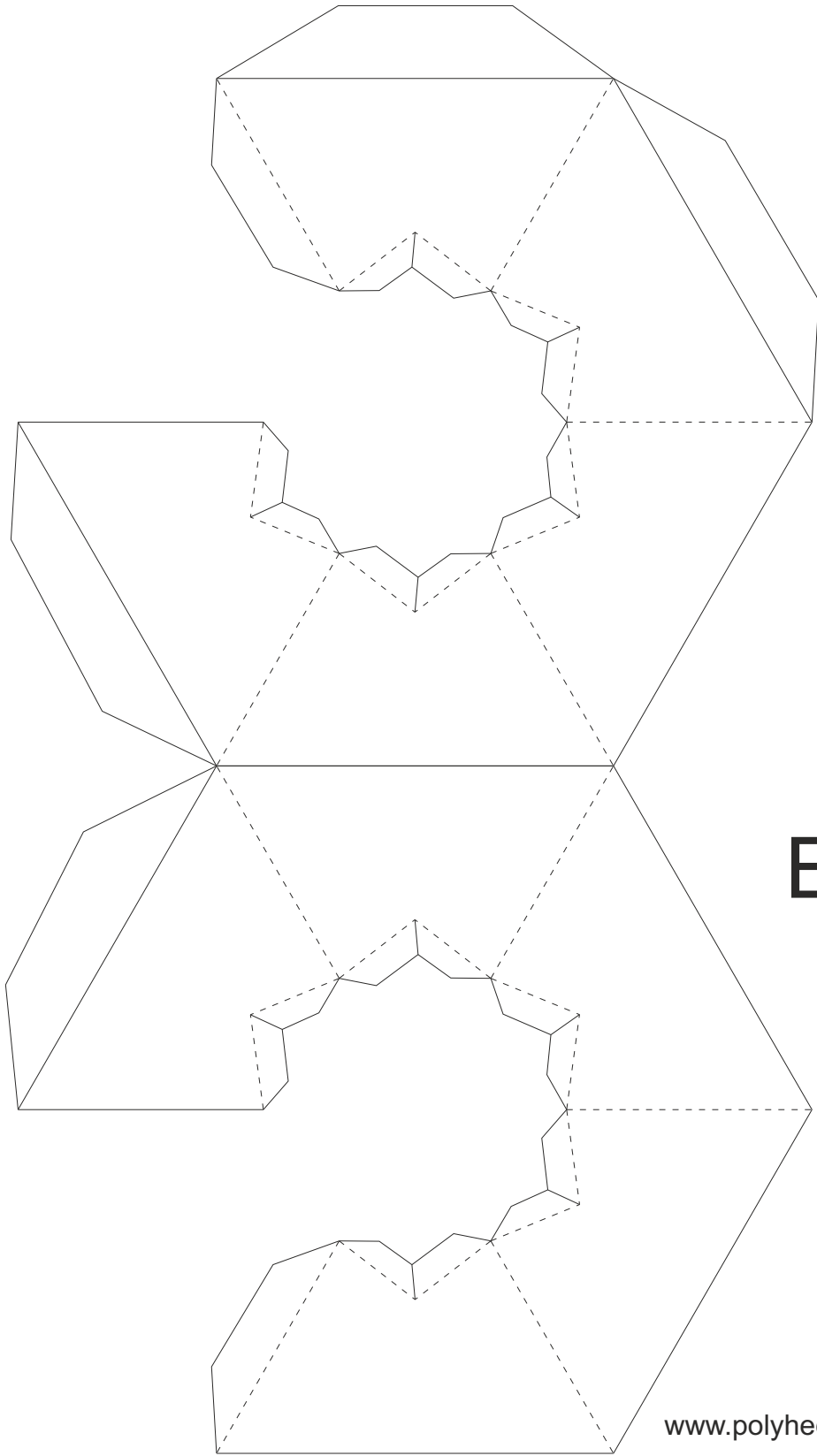
**B**

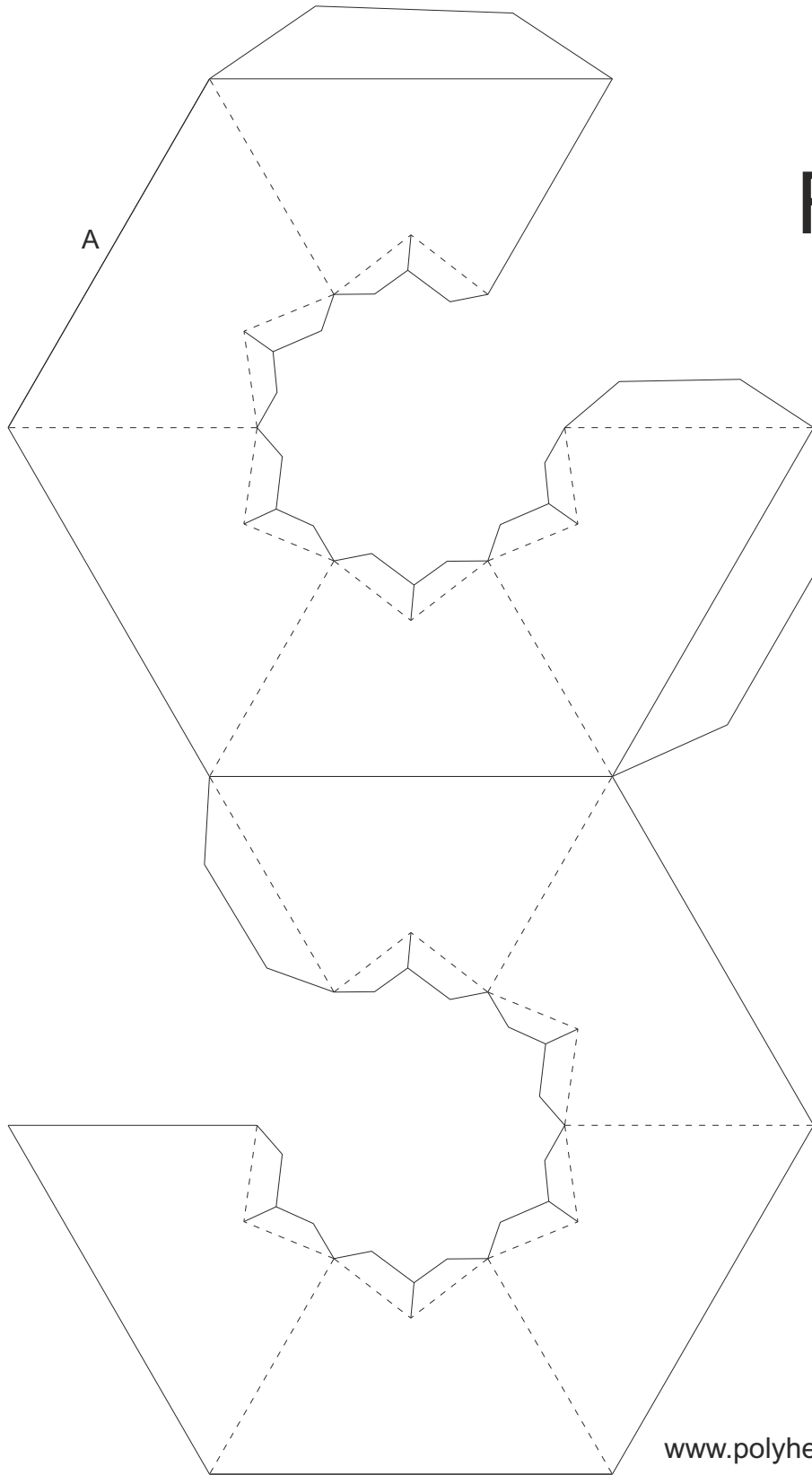
**A**



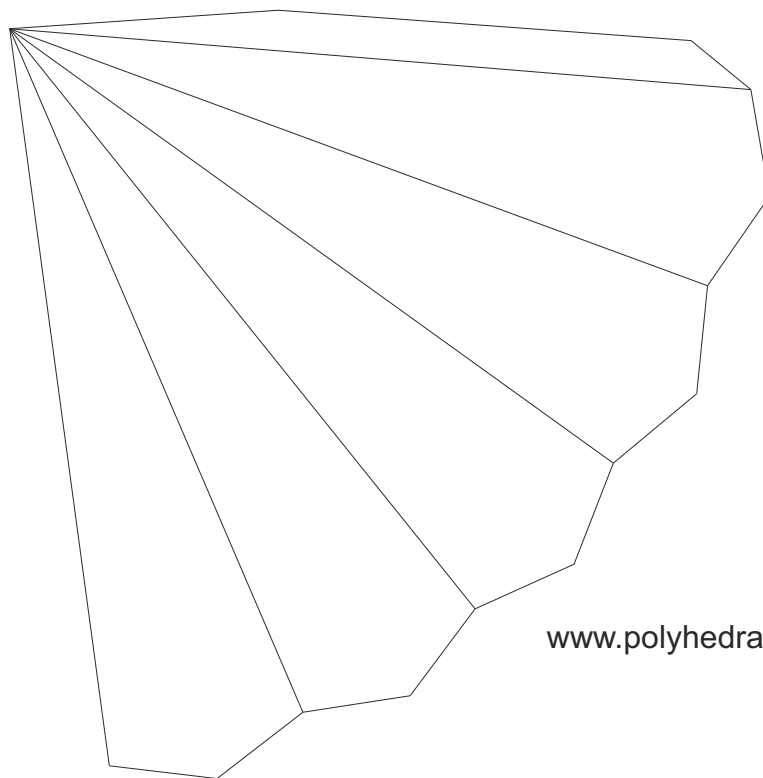
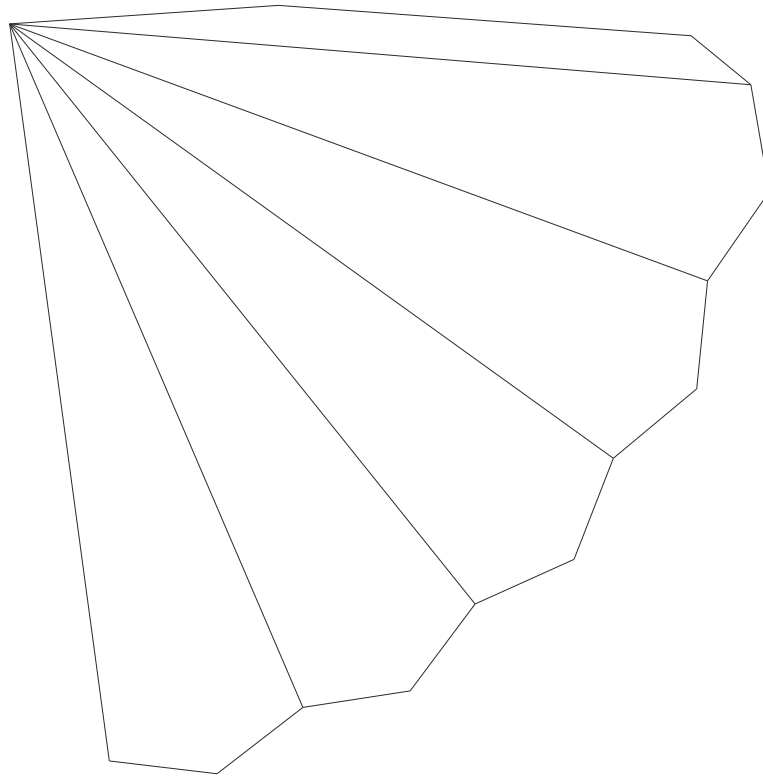
A

D

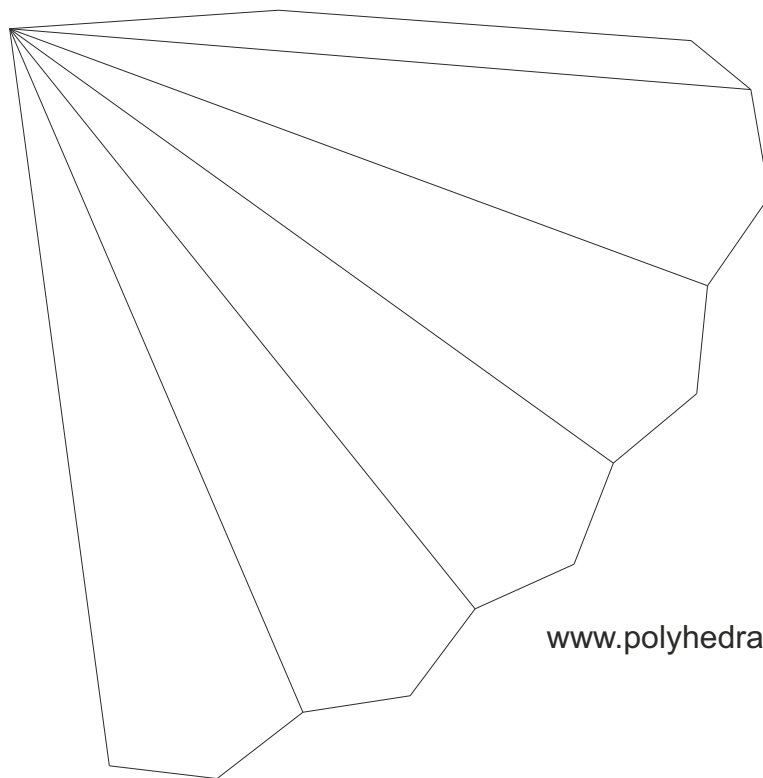
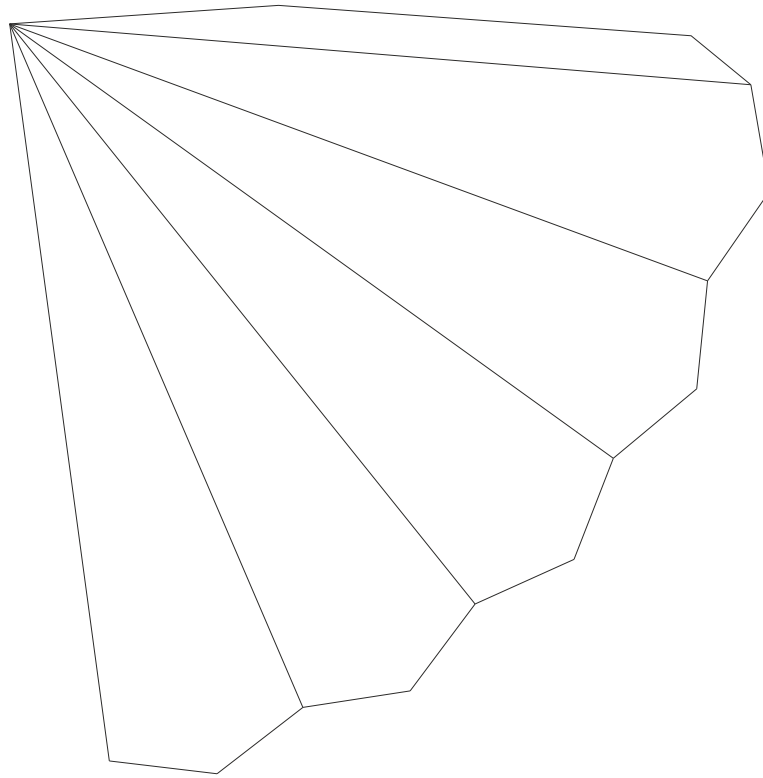




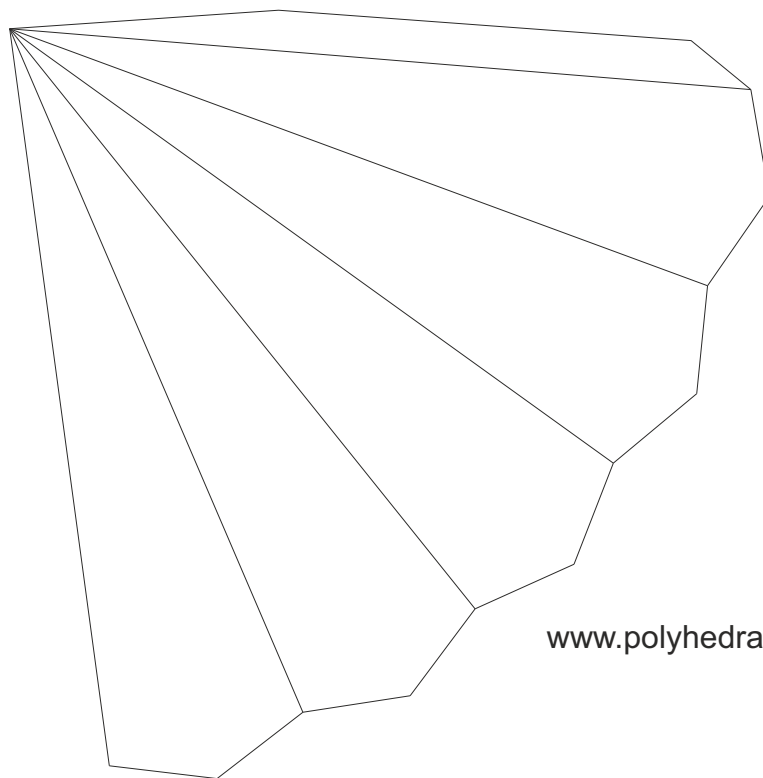
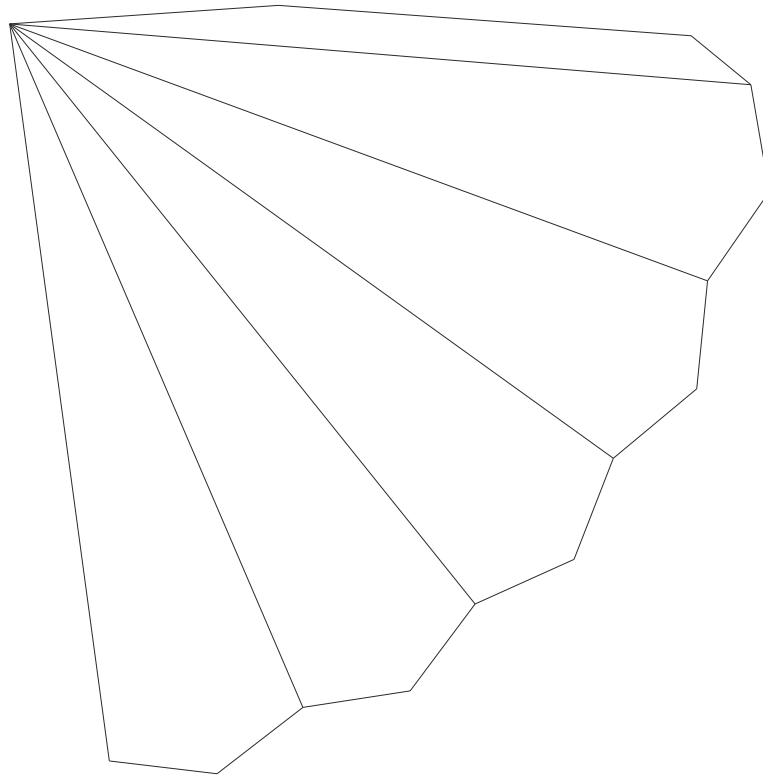




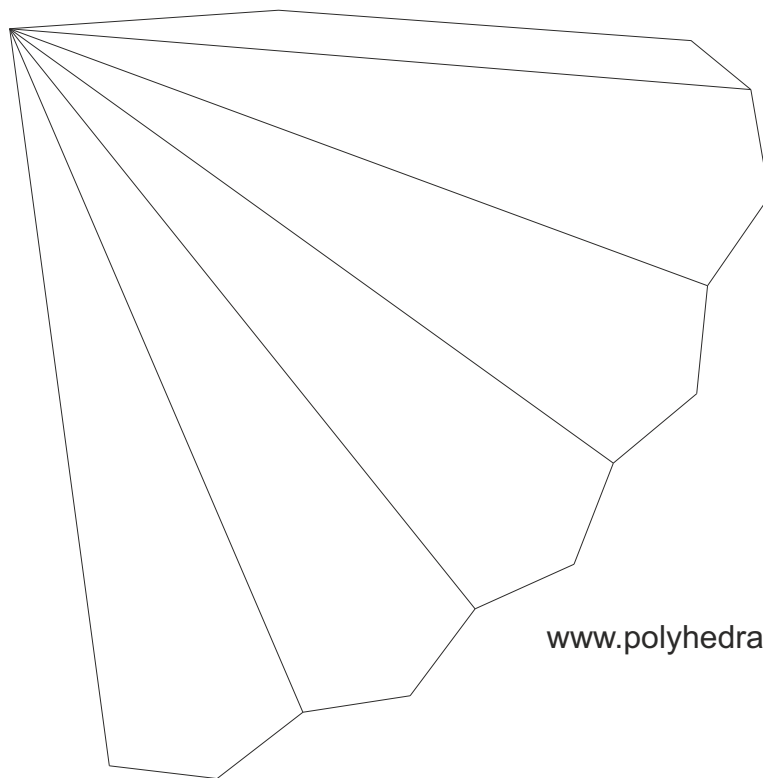
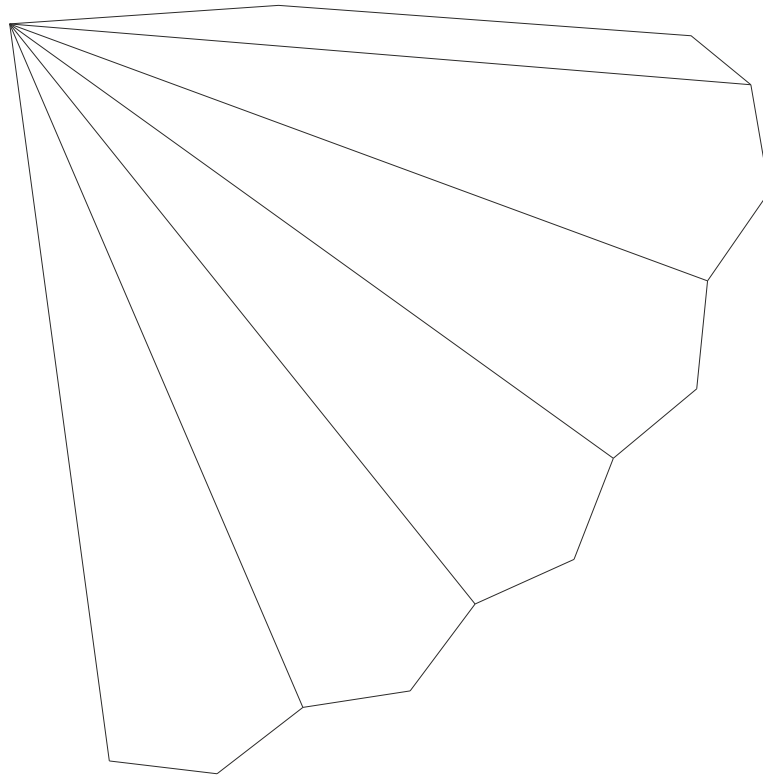
[www.polyhedra.net](http://www.polyhedra.net)



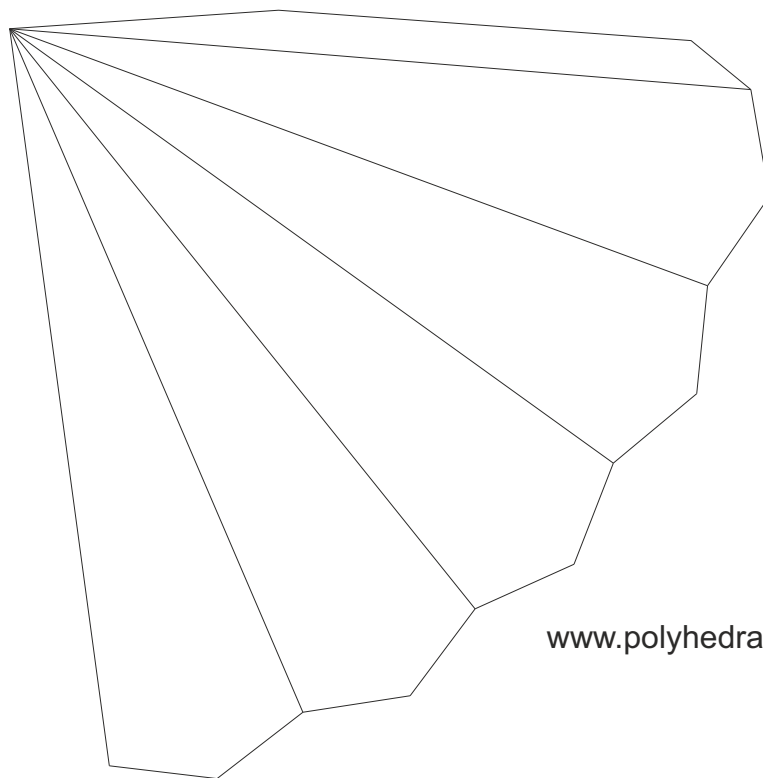
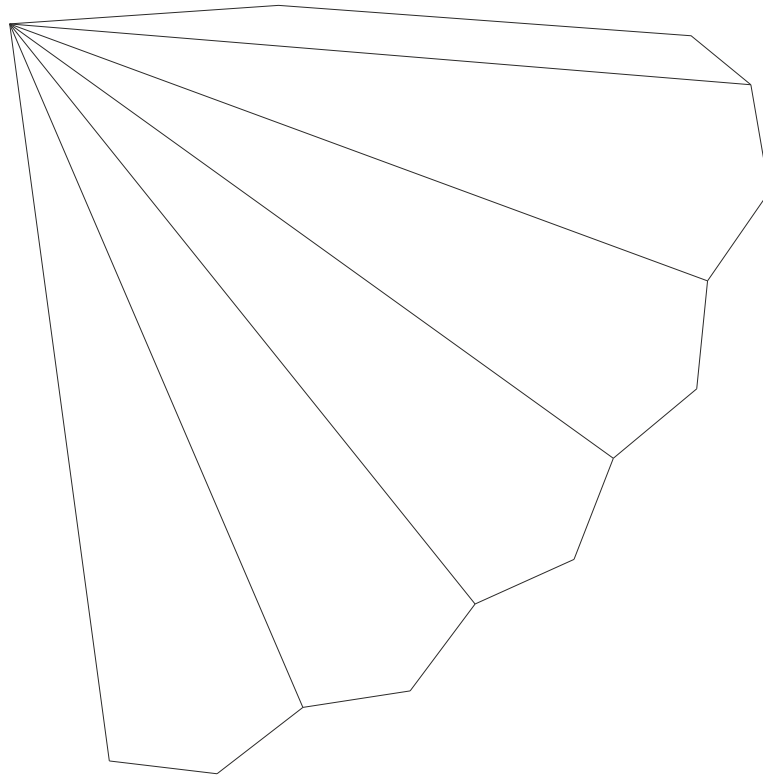
[www.polyhedra.net](http://www.polyhedra.net)



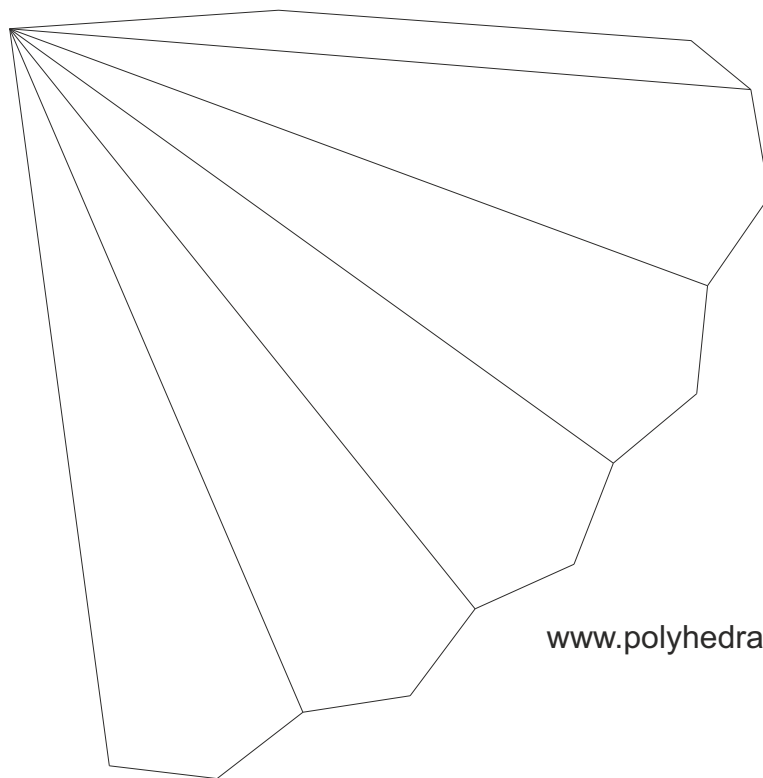
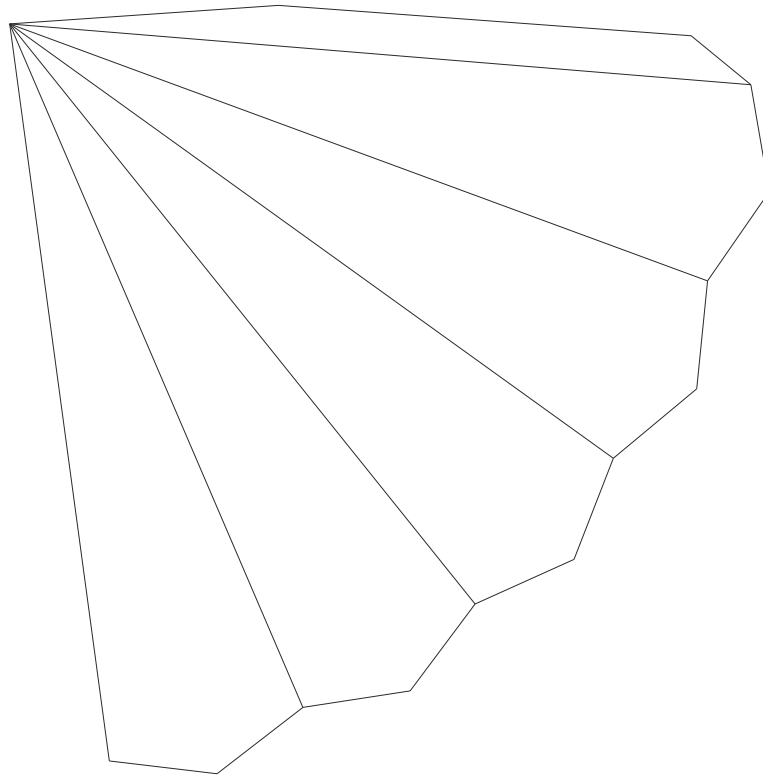
[www.polyhedra.net](http://www.polyhedra.net)



[www.polyhedra.net](http://www.polyhedra.net)



[www.polyhedra.net](http://www.polyhedra.net)



[www.polyhedra.net](http://www.polyhedra.net)