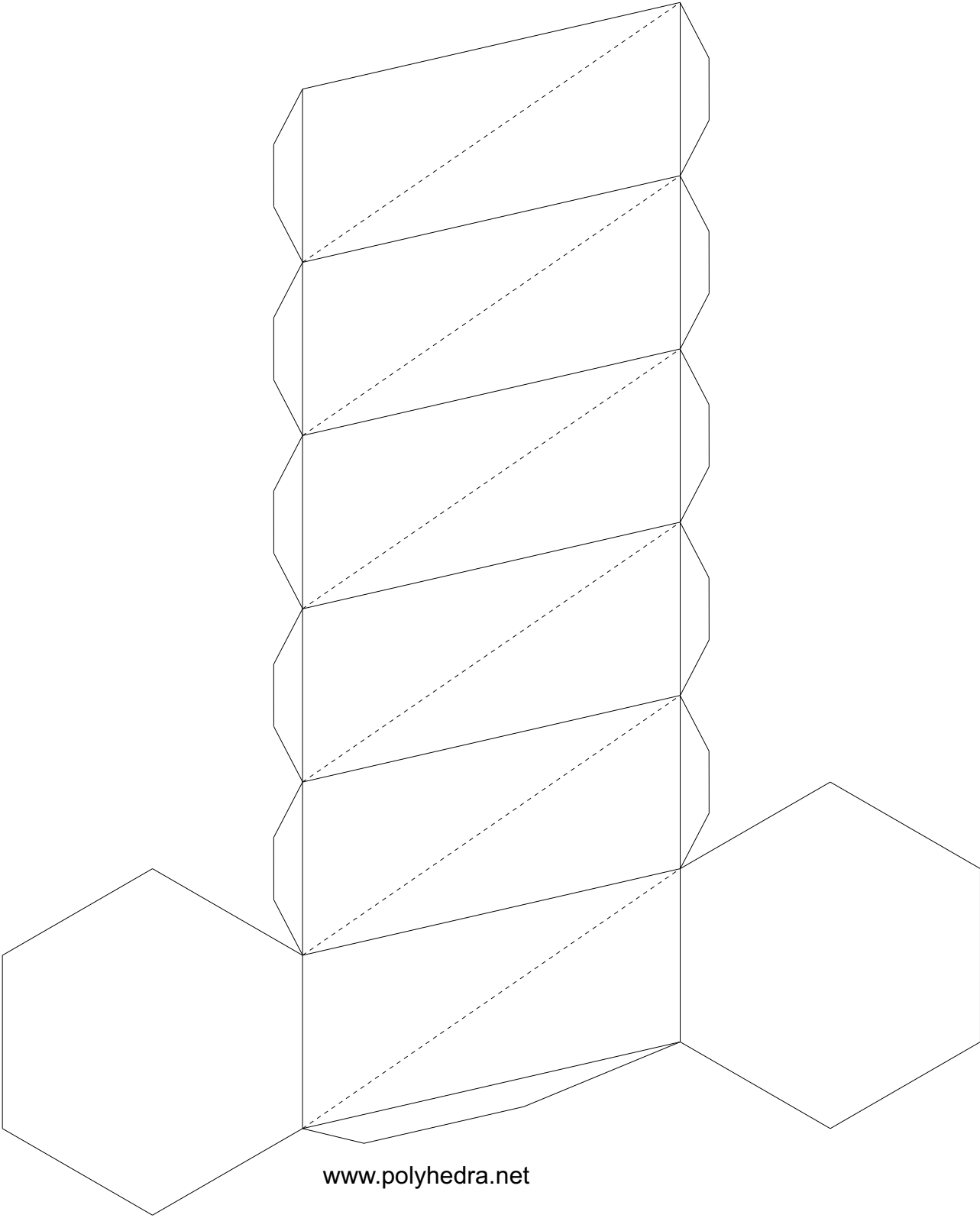
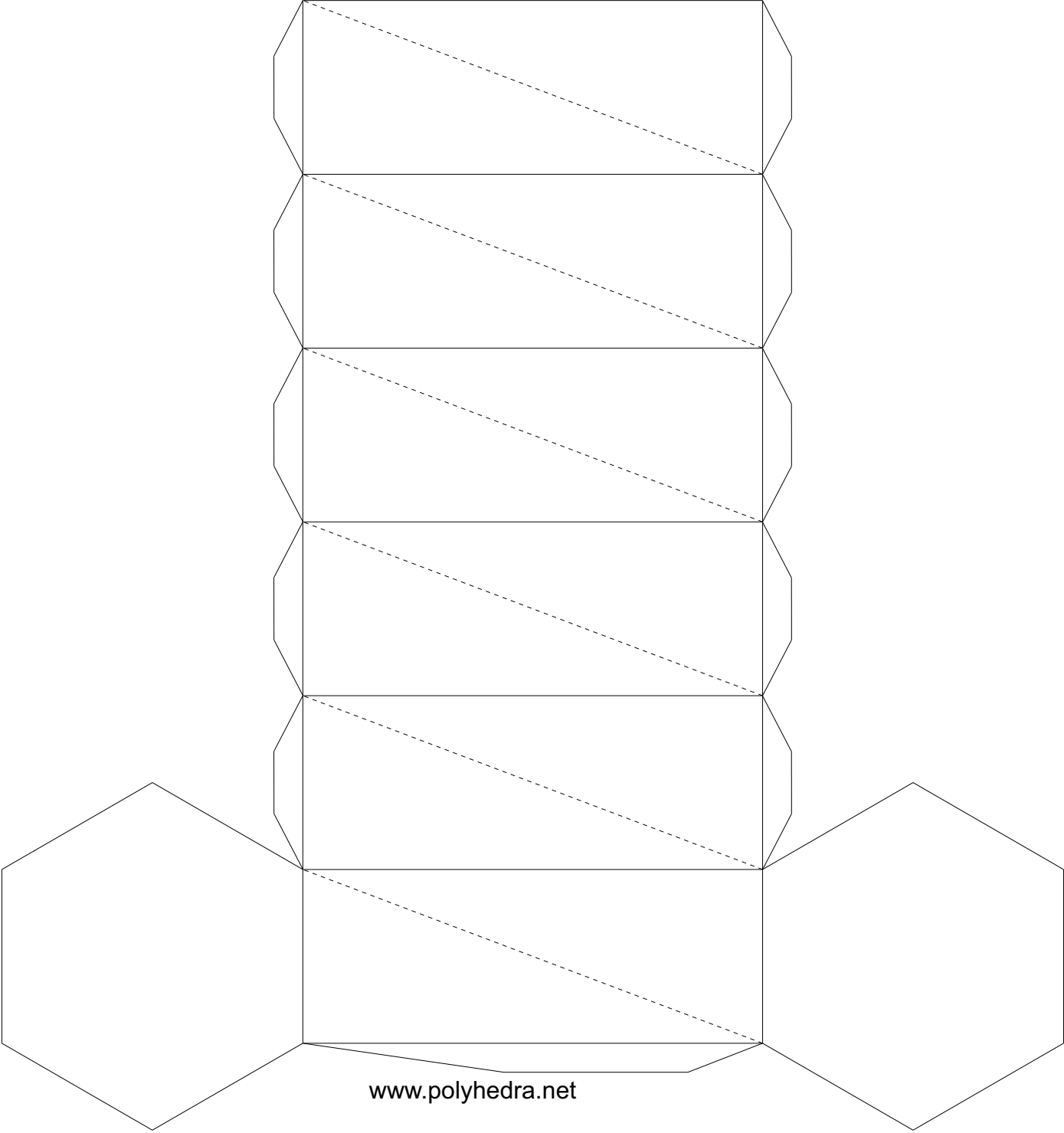


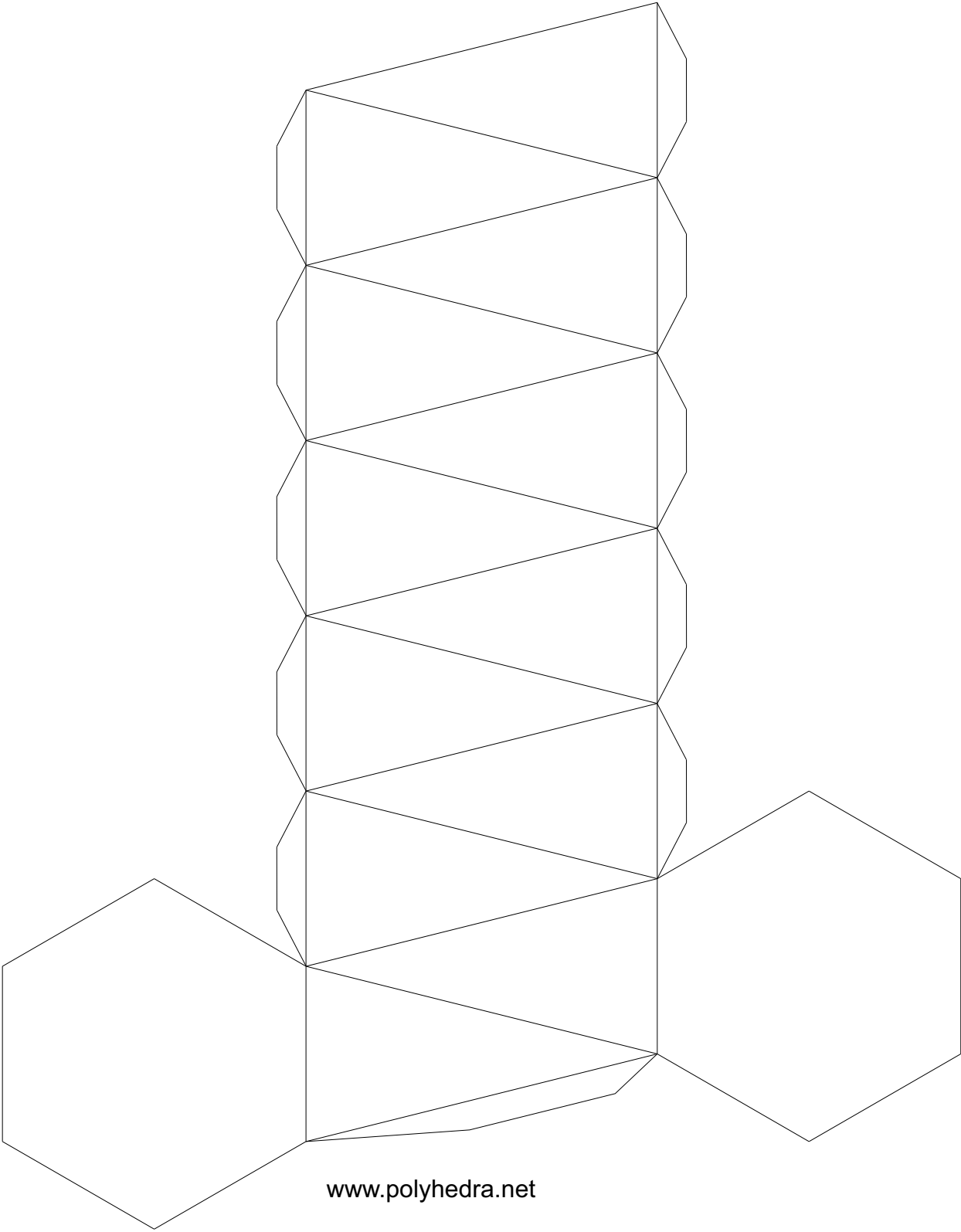
Twisted Hexagonal Prism
120 degrees



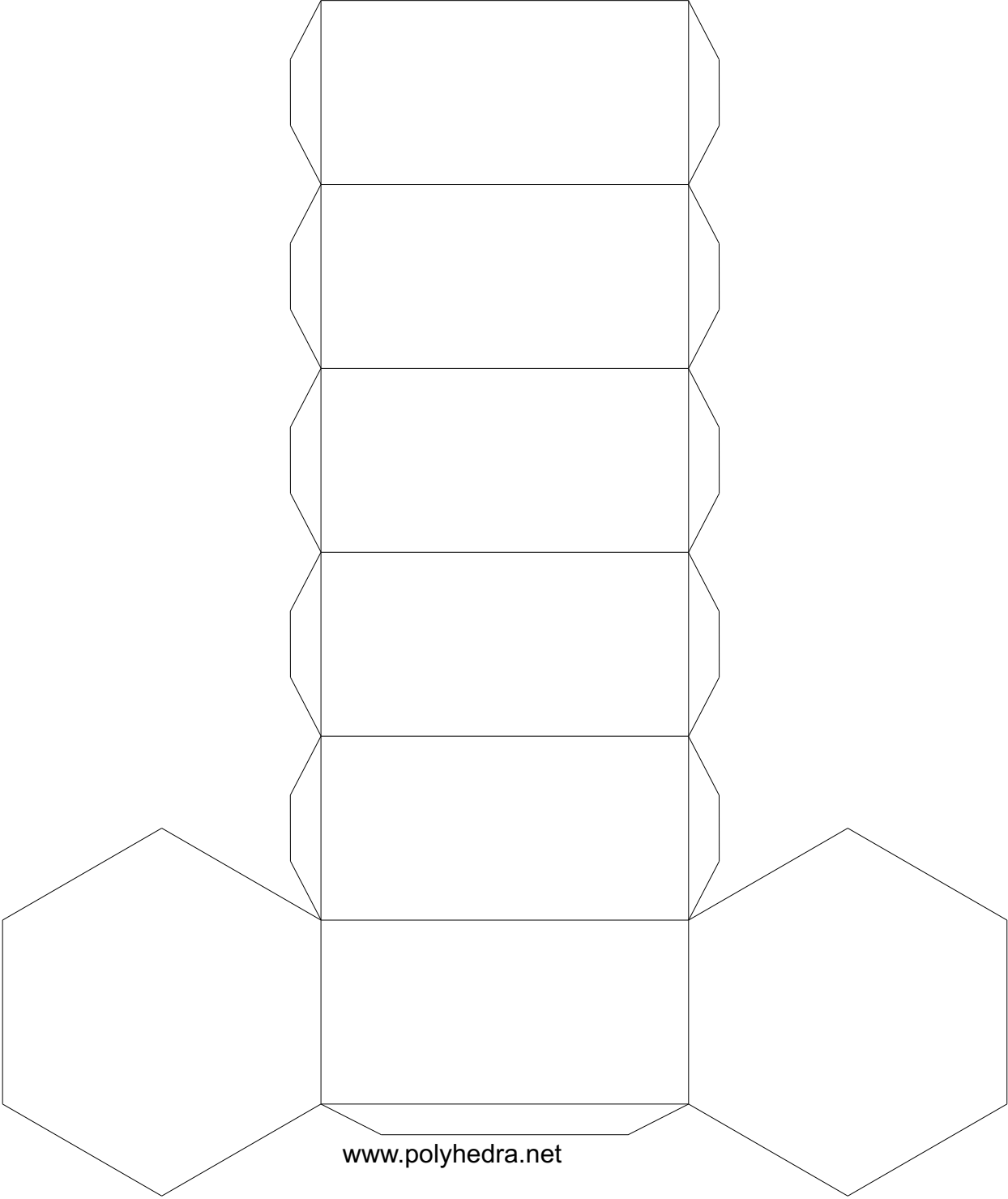
Twisted Hexagonal Prism
180 degrees



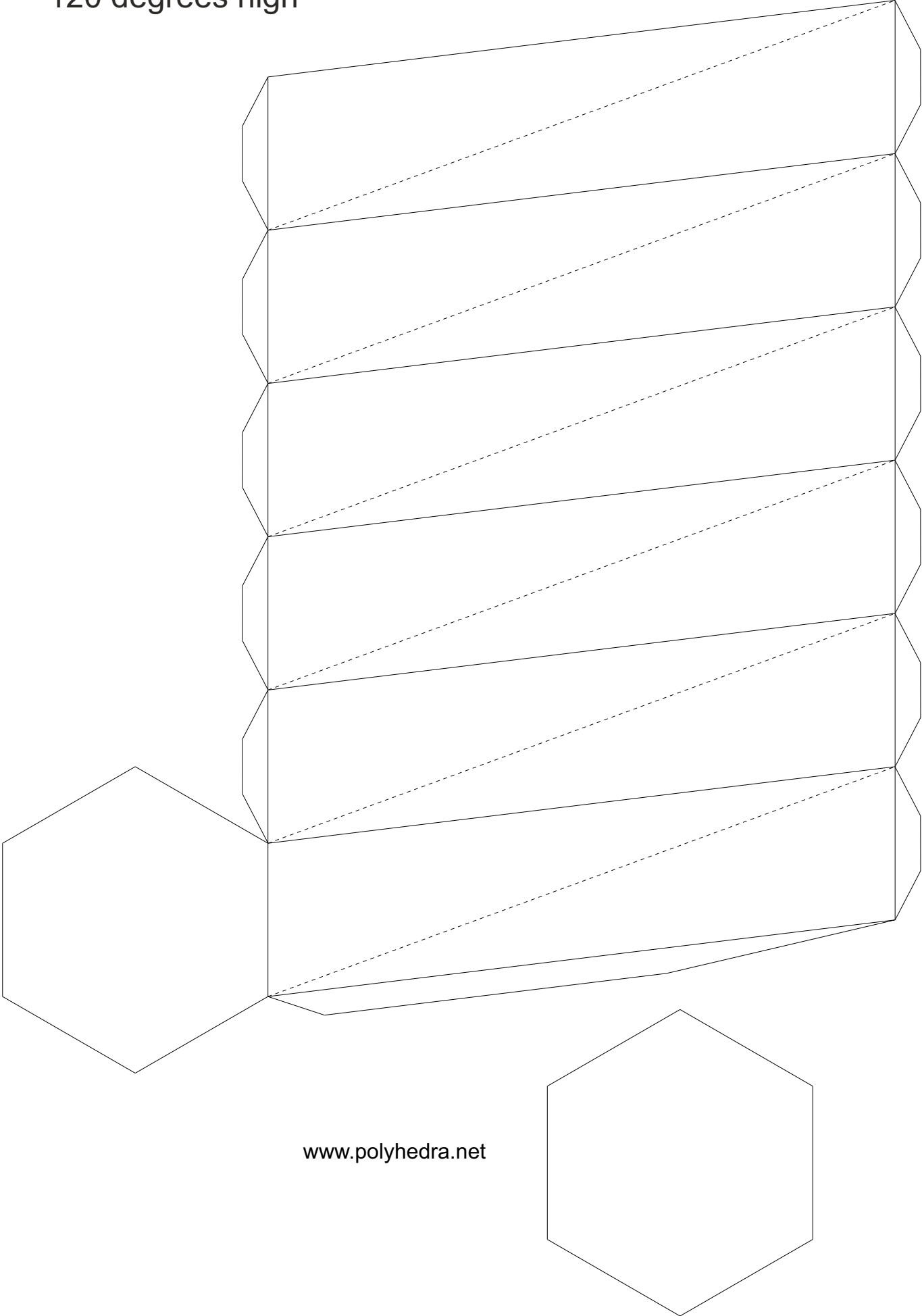
Twisted Hexagonal Prism
30 degrees
(Hexagonal Antiprism)



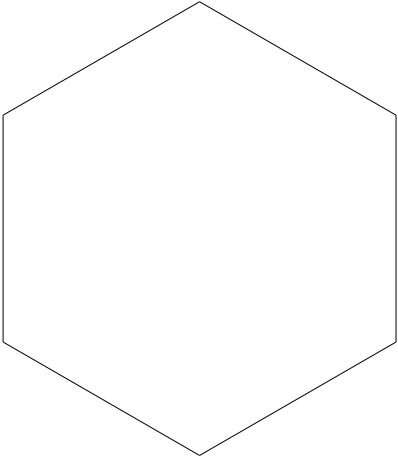
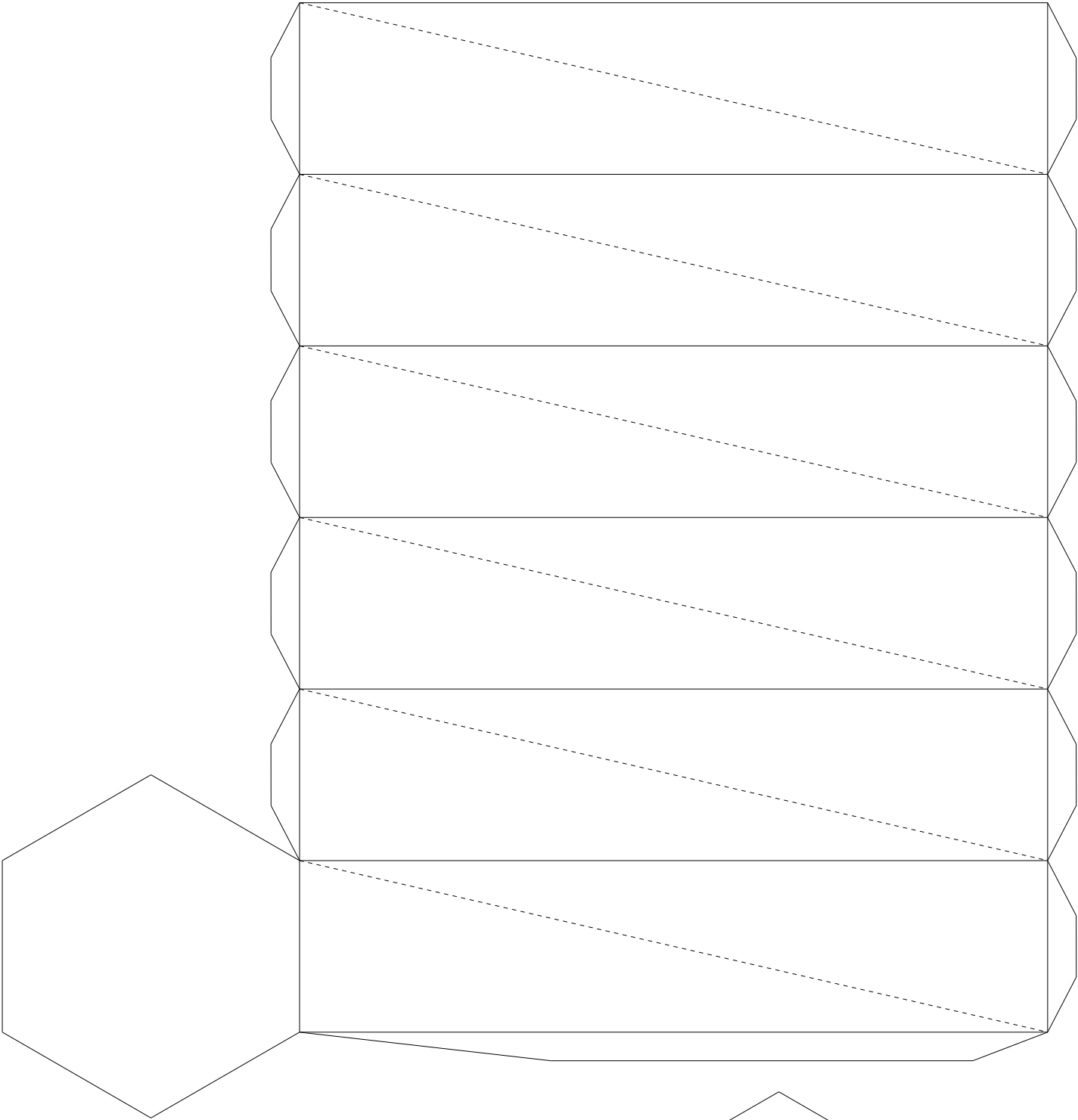
Hexagonal Prism
(0 degrees)



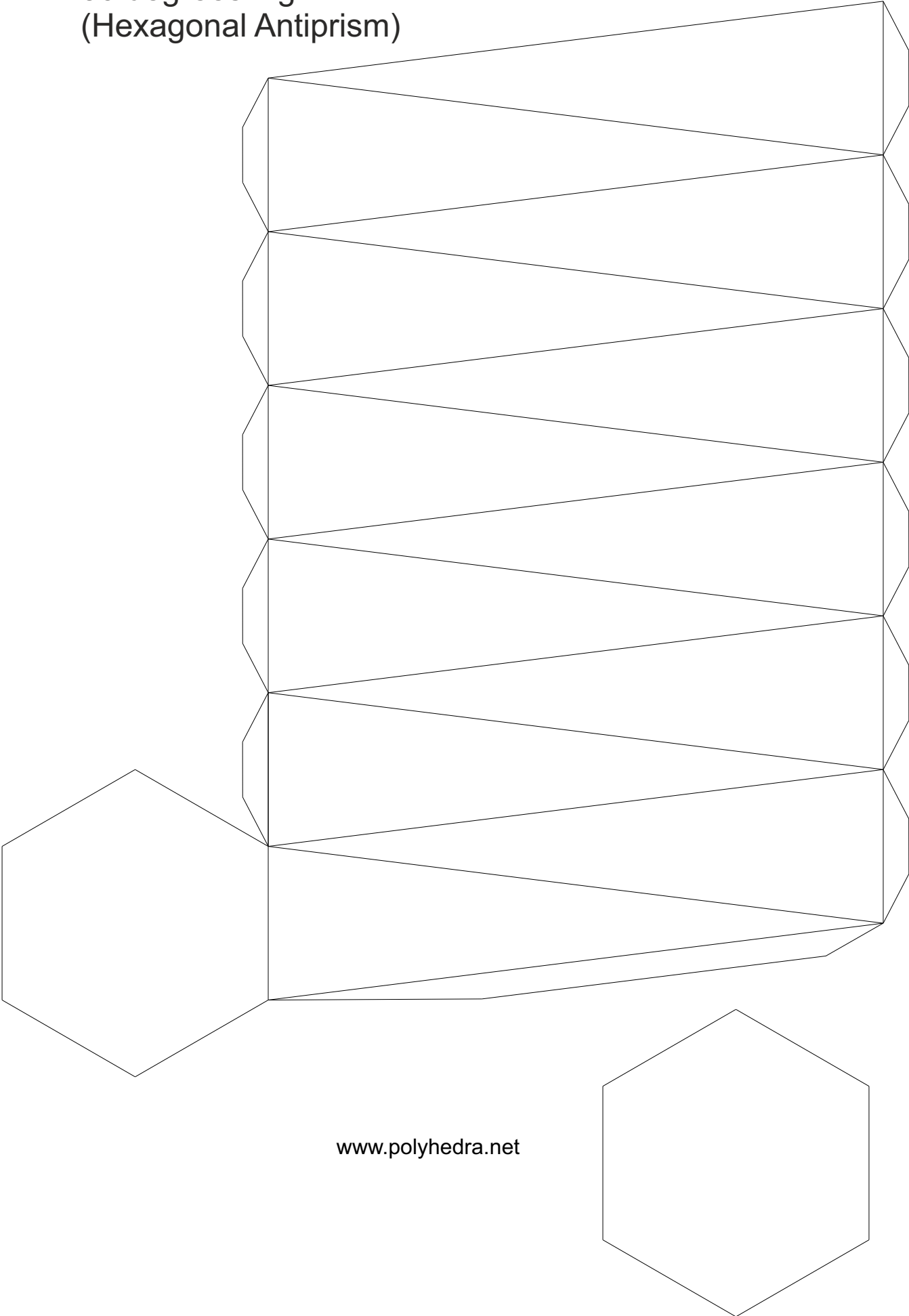
Twisted Hexagonal Prism
120 degrees high



Twisted Hexagonal Prism
180 degrees high



Twisted Hexagonal Prism
30 degrees high
(Hexagonal Antiprism)



Hexagonal Prism
(0 degrees) high

